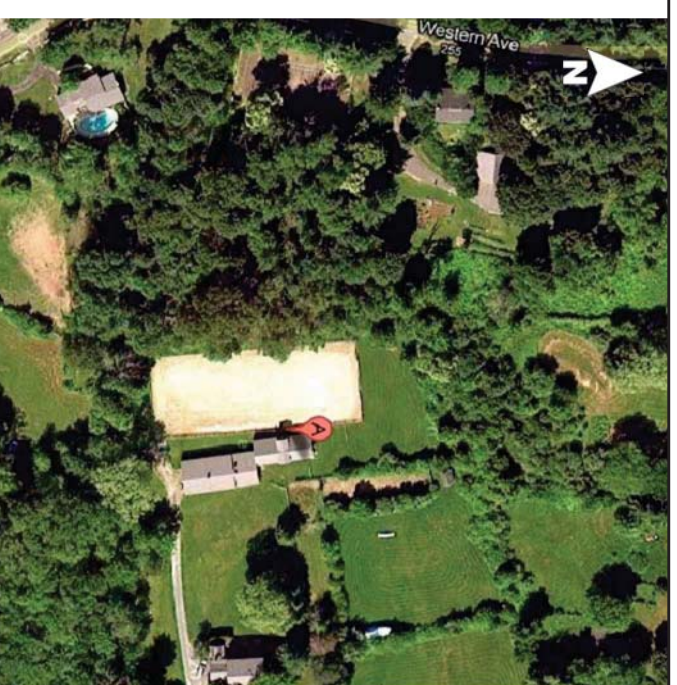
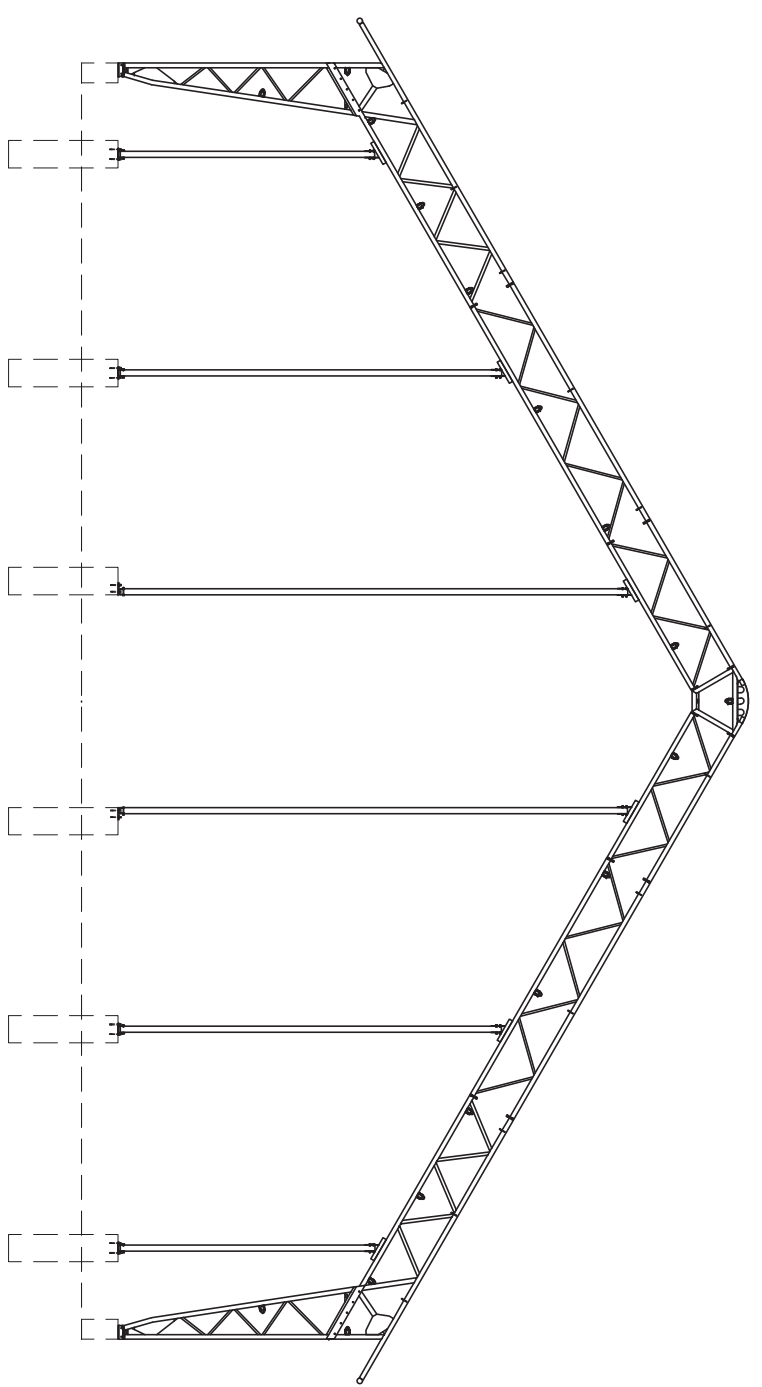


70' VP STRUCTURE



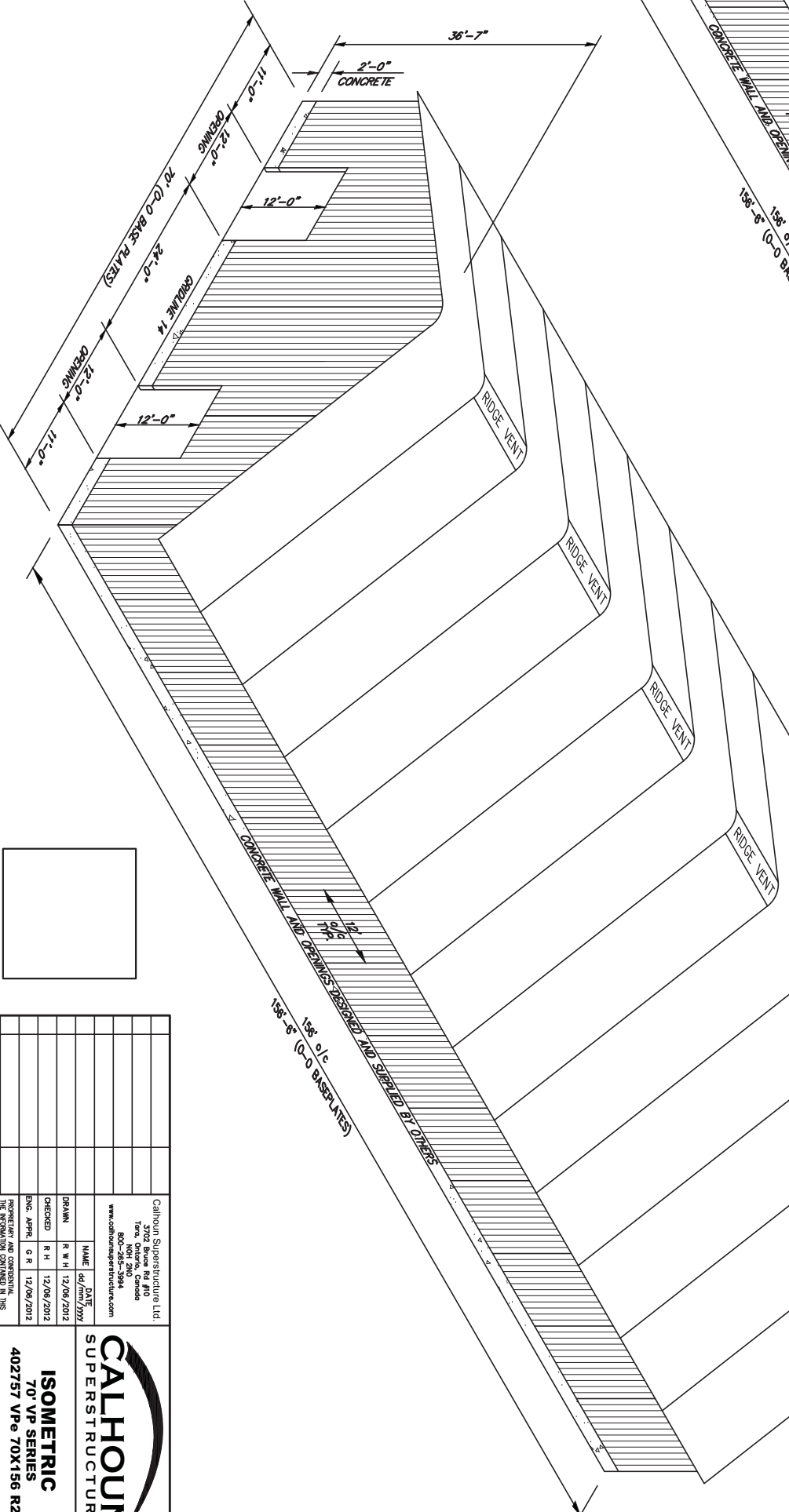
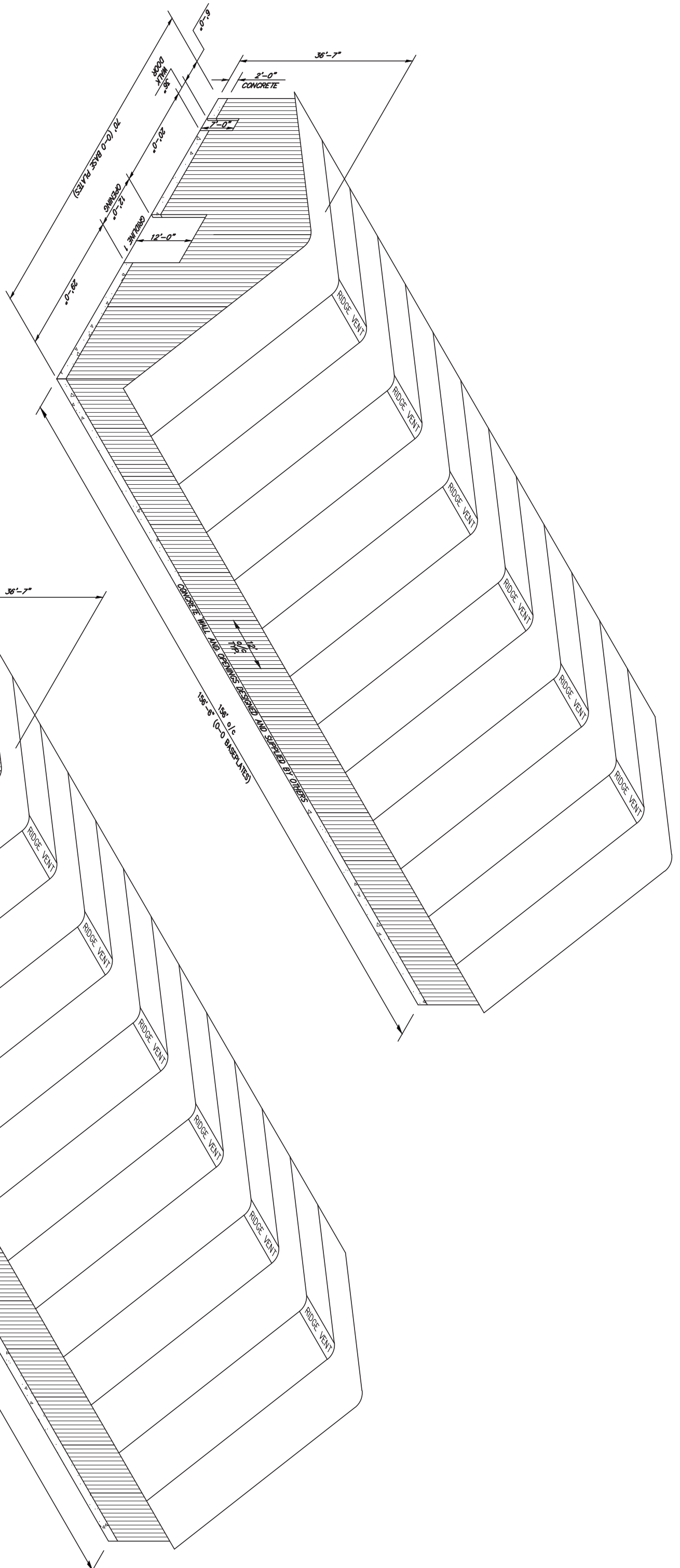
SITE LOCATION	
LAT / LONG	APPROX. 42.224305 N.-71.401699W
ADDRESS	12 AMES DRIVE
CITY/TOWN	SHERBORN
PROV./STATE	MASSACHUSETTS
COUNTRY	USA

PROJECT DESCRIPTION	
DEALER	IRON HORSE STRUCTURES
OWNER'S NAME	CHESTNAIN EQUESTRIAN CENTER
MODEL	VP-EAVE
PROFILE WIDTH	70'
STRUCTURE LENGTH	156'
TRUSS SPACING	12'

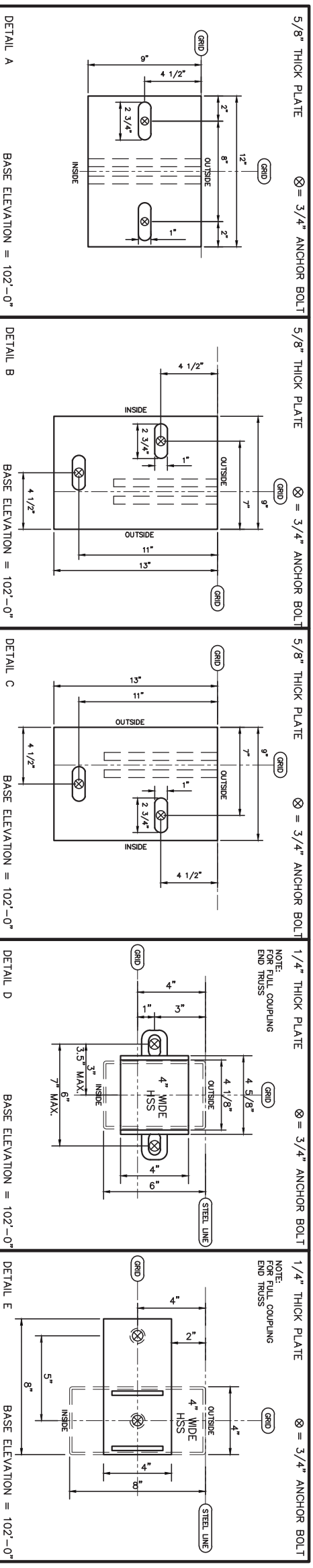
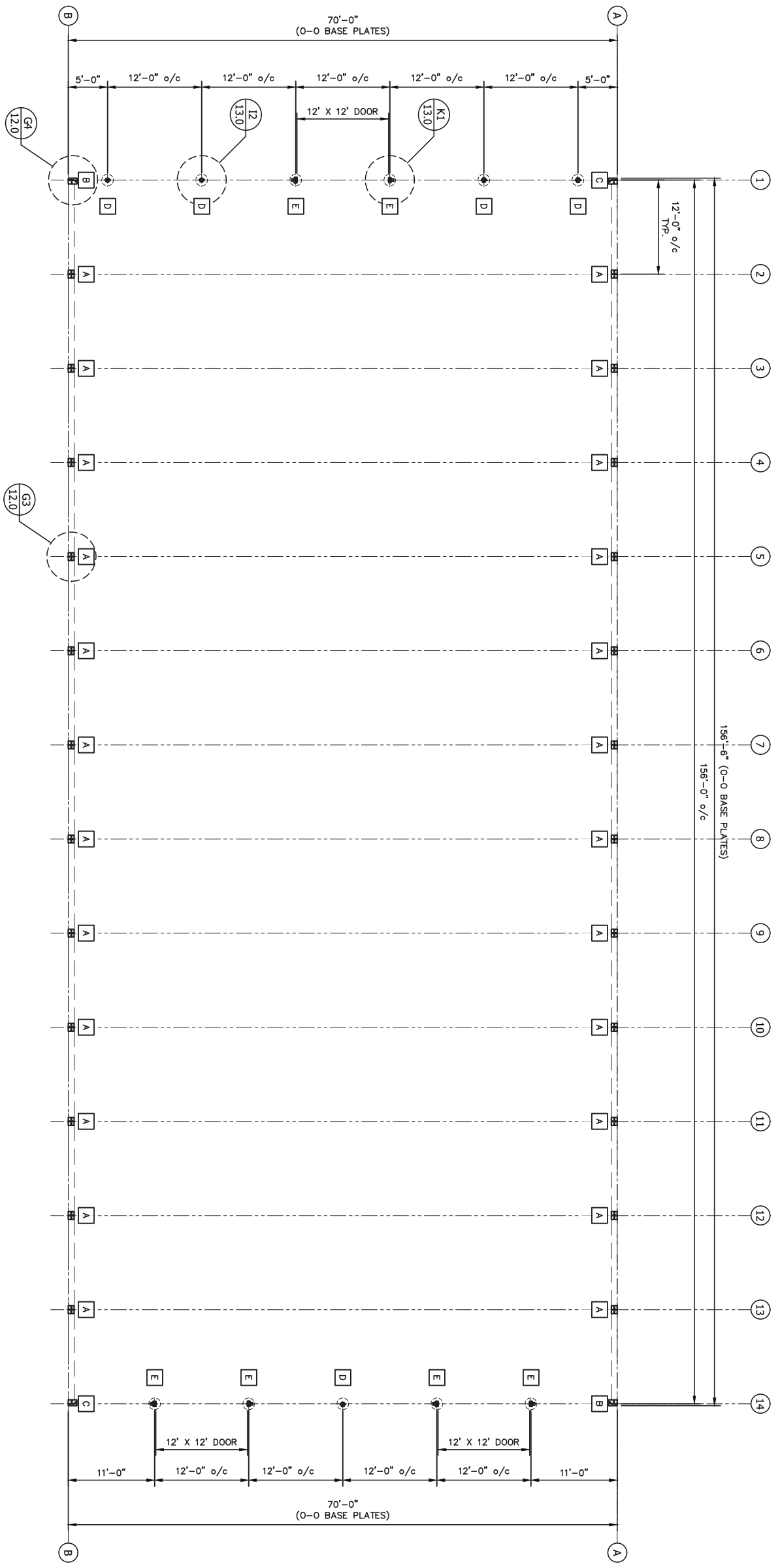
DRAWING INDEX		
DWG No.	SHEET No.	TITLE
1.0	1 OF 13	TITLE SHEET
2.0	2 OF 13	GENERAL STRUCTURAL NOTES
3.0	3 OF 13	ISOMETRIC
4.0	4 OF 13	FOUNDATION PLAN
5.0	5 OF 13	BRACING LAYOUT
6.0	6 OF 13	FRAMING PLAN
7.0	7 OF 13	ELEVATION A
8.0	8 OF 13	ELEVATION B
9.0	9 OF 13	ELEVATION C
10.0	10 OF 13	DETAILS
11.0	11 OF 13	DETAILS
12.0	12 OF 13	DETAILS
13.0	13 OF 13	DETAILS

REVISION / ISSUE	
No.	DESCRIPTION
1	ENGINEER APPROVAL
2	SEE SHEET 6.0, 9.0 & 13.0

Calhoun Superstructure Ltd. 3702 Steeles Rd #10 Unit 100 Scarborough, Ontario M1V 4S7 905-285-3994 www.calhounsuperstructure.com		
NAME DATE R W H R H DWA, APPR.	DATE 12/06/2012 12/06/2012 12/06/2012	
PROJECT AND COMMERCIAL INFORMATION CONTAINED IN THIS DRAWING IS THE PROPERTY OF CALHOUN SUPERSTRUCTURE LTD. NO PART OF THIS DRAWING IS TO BE REPRODUCED OR TRANSMITTED IN ANY FORM OR BY ANY MEANS, ELECTRONIC OR MECHANICAL, WITHOUT PERMISSION IN WRITING FROM CALHOUN SUPERSTRUCTURE LTD.		TITLE SHEET 70' VP SERIES 402757 VPe 70X156 R2
SCALE: D		
SHEET: 1 OF 13		SIZE: 1.0



<p>Calhoun Superstructure Ltd. 3702 Bruce Rd #10 York, ME 04090 800-265-3984 www.calhounsuperstructure.com</p>		<p>REGISTERED AND CORPORATE ENGINEER REG. NO. 45072 DATE: 12/08/2012</p>
<p>DESIGNER NAME: RWH DATE: 12/08/2012</p>	<p>CHECKED NAME: RWH DATE: 12/08/2012</p>	<p>PROJECT AND COMPANY THE REGISTERED ENGINEER IN THE COMMONWEALTH OF MASSACHUSETTS CALHOUN SUPERSTRUCTURE, INC. THROUGH THE DESIGN PROFESSION OF CALHOUN SUPERSTRUCTURE IS HEREBY</p>
<p>1 ENGINEER APPROVAL 12/08/2012 DATE</p>		<p>REVISION / ISSUE</p>
<p>ISOMETRIC 70' VP SERIES 402757 VP 70X156 R2</p>		<p>SCALE: N T S 3 OF 13</p>



FOUNDATION DESIGNED AND SUPPLIED BY OTHERS

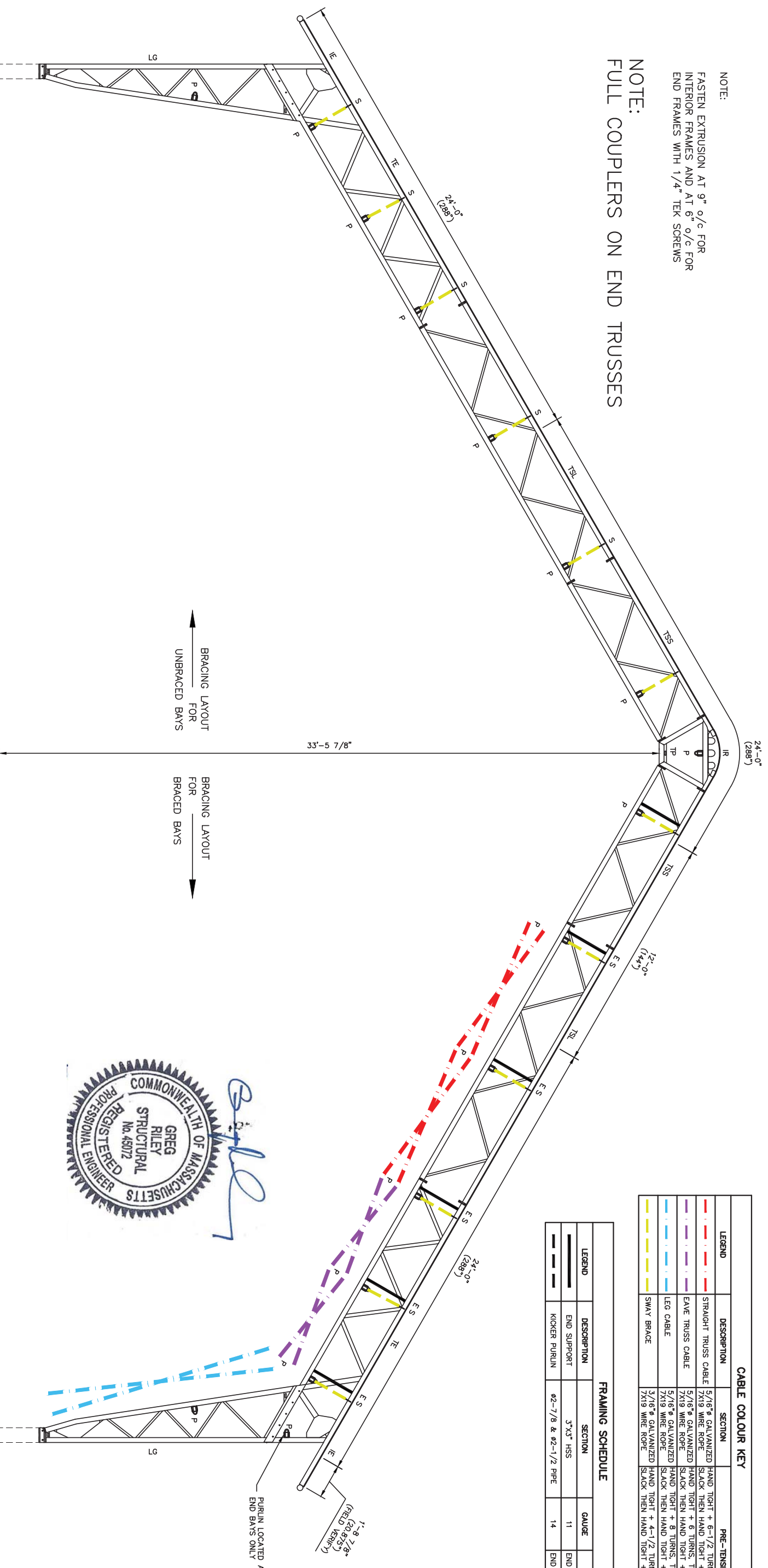


- GENERAL NOTES**
1. VERIFY ALL DIMENSIONS PRIOR TO CONSTRUCTION. RESOLVE DISCREPANCIES WITH THE BUILDING SUPPLIER.
 2. FINISHED FLOOR ELEVATION THIS SHEET = 100'-0" U.N.O.
 3. ALL CONCRETE COMPONENTS ARE DESIGNED AND SUPPLIED BY OTHERS

<p>CALHOUN SUPERSTRUCTURE</p> <p>3702 Route 1A Wrentham, MA 01994 508-565-3984 www.calhounsuperstructure.com</p>		<p>DATE: 12/08/2012</p> <p>DATE: 12/08/2012</p>
<p>DESIGNED BY: R.H.</p> <p>CHECKED BY: R.H.</p> <p>ENGR. APPROV. DATE: 12/08/2012</p>	<p>PROJECT AND CONSTRUCTION INFORMATION:</p> <p>PROJECT: FOUNDATION PLAN</p> <p>DESCRIPTION: 70' VP SERIES</p> <p>SCALE: 1/8" = 1' - 4" 13</p>	<p>NO. 1</p> <p>DESCRIPTION: ENGINEER APPROVAL</p> <p>DATE: 12/08/2012</p>

NOTE:
FASTEN EXTRUSION AT 9" o/c FOR INTERIOR FRAMES AND AT 6" o/c FOR END FRAMES WITH 1/4" TEK SCREWS

NOTE:
FULL COUPLERS ON END TRUSSES



FABRIC LENGTH ~ 85'-8" TOTAL

CABLE COLOUR KEY			
LEGEND	DESCRIPTION	SECTION	PRE-TENSION
	STRAIGHT TRUSS CABLE	5/16" # GALVANIZED WIRE ROPE	HAND TIGHT + 6-1/2 TURNS, THEN TURN TO SLACK THEN HAND TIGHT + 7/8 TURNS
	EAVE TRUSS CABLE	5/16" # GALVANIZED WIRE ROPE	HAND TIGHT + 6 TURNS, THEN TURN TO SLACK THEN HAND TIGHT + 3/4 TURNS
	LEG CABLE	5/16" # GALVANIZED WIRE ROPE	HAND TIGHT + 8 TURNS, THEN TURN TO SLACK THEN HAND TIGHT + 1-5/8 TURNS
	SWAY BRACE	3/16" # GALVANIZED WIRE ROPE	HAND TIGHT + 4-1/2 TURNS, THEN TURN TO SLACK THEN HAND TIGHT + 1 TURN

FRAMING SCHEDULE				
LEGEND	DESCRIPTION	SECTION	GAUGE	COMMENTS
	END SUPPORT	3"x3" HSS	11	END BAYS ONLY
	KICKER PURLIN	ø2-7/8 & ø2-1/2 PIPE	14	END BAY ONLY

BRACING LEGEND	
MARK	DESCRIPTION
P	PURLIN
E	END SUPPORT
S	SWAY CABLE

COMPONENT SCHEDULE					
MARK	DESCRIPTION	CHORDS	WEBS	BOLTS	COMMENTS
TSS	TRUSS STRAIGHT SHORT	3"x3"x1/8"	U 1.5"x1.25"x11GA	5/8" GR 5	ALL STEEL F _y =50 KSI HOT DIP GALVANIZED TO MIN. CSA G164/ASTM A123-09
TSL	TRUSS STRAIGHT LONG	3"x3"x1/8"	U 1.5"x1.25"x11GA	5/8" GR 5	ALL STEEL F _y =50 KSI HOT DIP GALVANIZED TO MIN. CSA G164/ASTM A123-09
TE	TRUSS EAVE	3"x3"x3/16" INSIDE CHORD 3"x3"x1/8" OUTSIDE CHORD	U 1.5"x1.25"x11GA	5/8" GR 5	ALL STEEL F _y =50 KSI HOT DIP GALVANIZED TO MIN. CSA G164/ASTM A123-09
LG	LEG	3"x3"x3/16" INSIDE CHORD 3"x3"x1/8" OUTSIDE CHORD	U 1.5"x1.25"x11GA	5/8" GR 5	ALL STEEL F _y =50 KSI HOT DIP GALVANIZED TO MIN. CSA G164/ASTM A123-09
TP	TRUSS PEAK	3"x3"x1/8"	---	5/8" GR 5	ALL STEEL F _y =50 KSI HOT DIP GALVANIZED TO MIN. CSA G164/ASTM A123-09
IR	INSERT ROUND	PLATE	---	1/2" GR 5	ALL STEEL F _y =50 KSI HOT DIP GALVANIZED TO MIN. CSA G164/ASTM A123-09
IE	INSERT EAVE	PLATE	---	1/2" GR 5	ALL STEEL F _y =50 KSI HOT DIP GALVANIZED TO MIN. CSA G164/ASTM A123-09

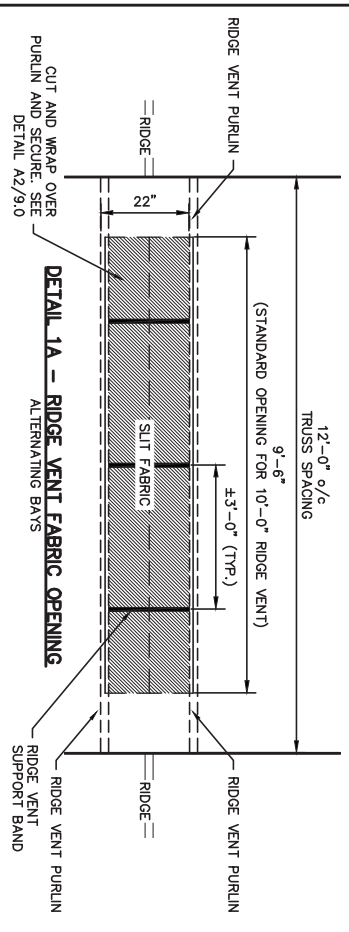
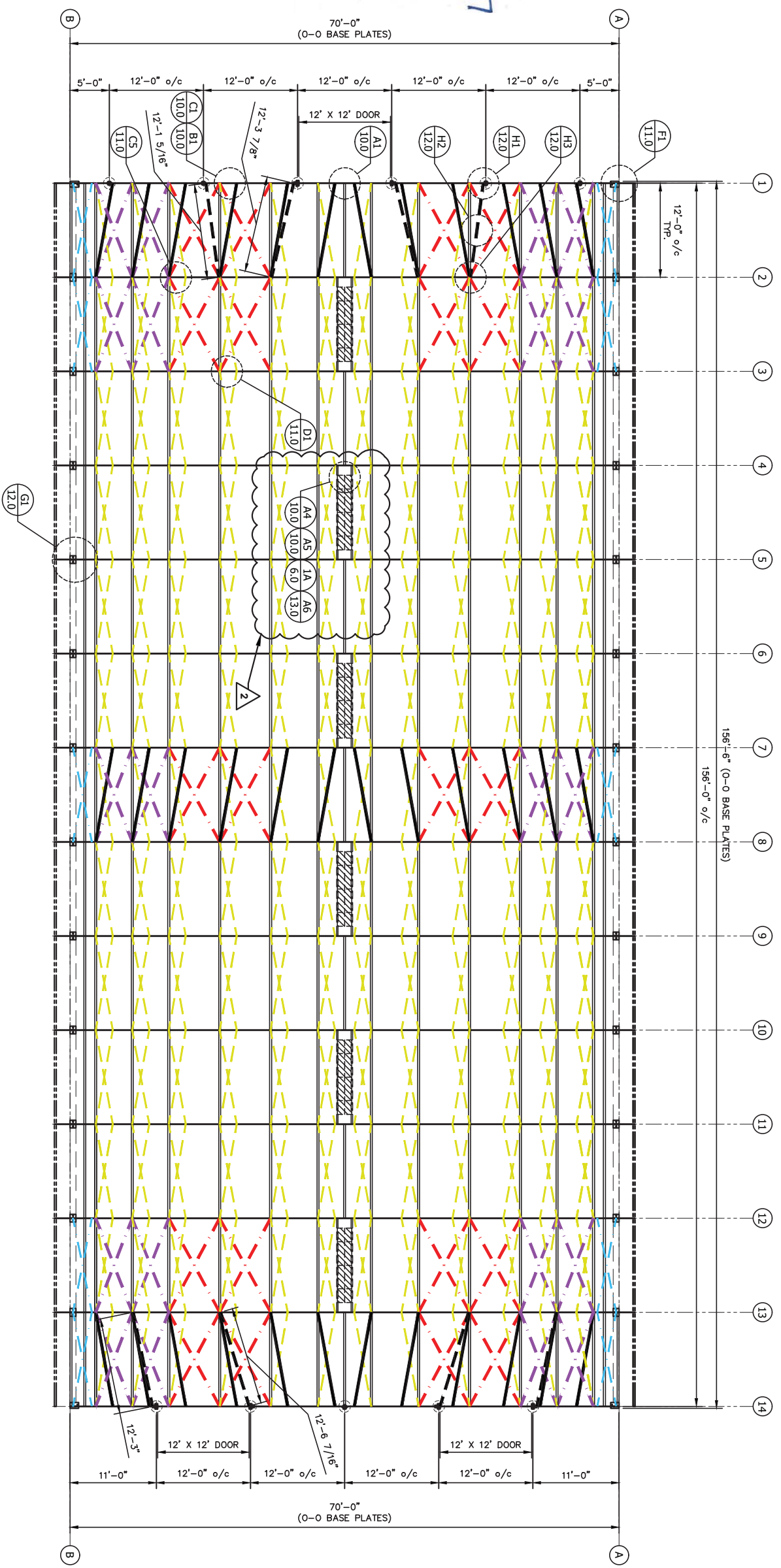


FOUNDATION DESIGNED AND SUPPLIED BY OTHERS

CALHOUN SUPERSTRUCTURE

BRACING LAYOUT
70" VP SERIES
402757 VP ø 70X156 R2

Calhoun Superstructure Ltd. 3702 Route Rd #10 Suite 200 800-265-3984 www.calhounsuperstructure.com		REPRESENTATIVE AND CONSULTANT FOR THE CONTRACTOR IN THE DESIGN OF THE BRACING SYSTEM. ANY CHANGES TO THE DESIGN SHALL BE APPROVED BY THE ENGINEER.	
No. 1 DESCRIPTION: BRACING LAYOUT REVISION / ISSUE	DATE: 12/08/2012 ENGINEER APPROVAL: [Signature] DATE: 12/08/2012	NAME: R.H. DATE: 12/08/2012 CHECKED: R.H. DATE: 12/08/2012 DRAWN: R.H. DATE: 12/08/2012	SCALE: 5/8" = 1' SHEET: 5 OF 13



- RECOMMENDED RIDGE VENT PANEL INSTALLATION METHOD
1. INSTALL RIDGE PURLINS (RV) - BOLT ONE END AND ALLOW THE OTHER END TO FLOAT.
 2. LIFT RIDGE VENT FABRIC PANELS OVER STANDARD INSTALL PRACTICES.
 3. LOOSELY TENSION FABRIC PANEL AT LEAVES.
 4. SLIT FABRIC AT PEAK AS DETAILED ABOVE.
 5. FOLD FABRIC FLAP DOWN INTO STRUCTURE. WRAP AROUND RV PURLINS AND SECURE ON BACK SIDE OF RV PURLIN (SEE DETAIL A2/9.0).
 6. INSTALL RIDGE VENT SUPPORT BAND (SEE DETAIL A2/9.0).
 7. APPLY FINAL TENSIONING TO FABRIC PANEL EQUALLY AT BOTH SIDES OF STRUCTURE.

CABLE COLOUR KEY			
LEGEND	DESCRIPTION	SECTION	PRE-TENSION
	STRAIGHT TRUSS CABLE	5/16" GALVANIZED 7X19 WIRE ROPE	HAND TIGHT + 6-1/2 TURNS, THEN TURN TO SLACK THEN HAND TIGHT + 7/8 TURNS
	EAVE TRUSS CABLE	5/16" GALVANIZED 7X19 WIRE ROPE	SLACK THEN HAND TIGHT + 3/4 TURNS
	LEG CABLE	5/16" GALVANIZED 7X19 WIRE ROPE	SLACK THEN HAND TIGHT + 1-5/8 TURNS
	SWAY BRACE	3/16" GALVANIZED 7X19 WIRE ROPE	HAND TIGHT + 4-1/2 TURNS, THEN TURN TO SLACK THEN HAND TIGHT + 1 TURN

FRAMING SCHEDULE				
LEGEND	DESCRIPTION	SECTION	GAUGE	COMMENTS
	TYPICAL PURLIN	3"x3" HSS	14	ALL BAYS
	RIDGE VENT PURLIN	3"x2" HSS	14	OPEN RIDGE BAY ONLY
	END SUPPORT	3"x3" HSS	11	END BAYS ONLY
	TENSION TUBE	3-1/2"	11	ALL BAYS
	KICKER PURLIN	Ø2-7/8 & Ø2-1/2 PIPE	14	END BAY ONLY

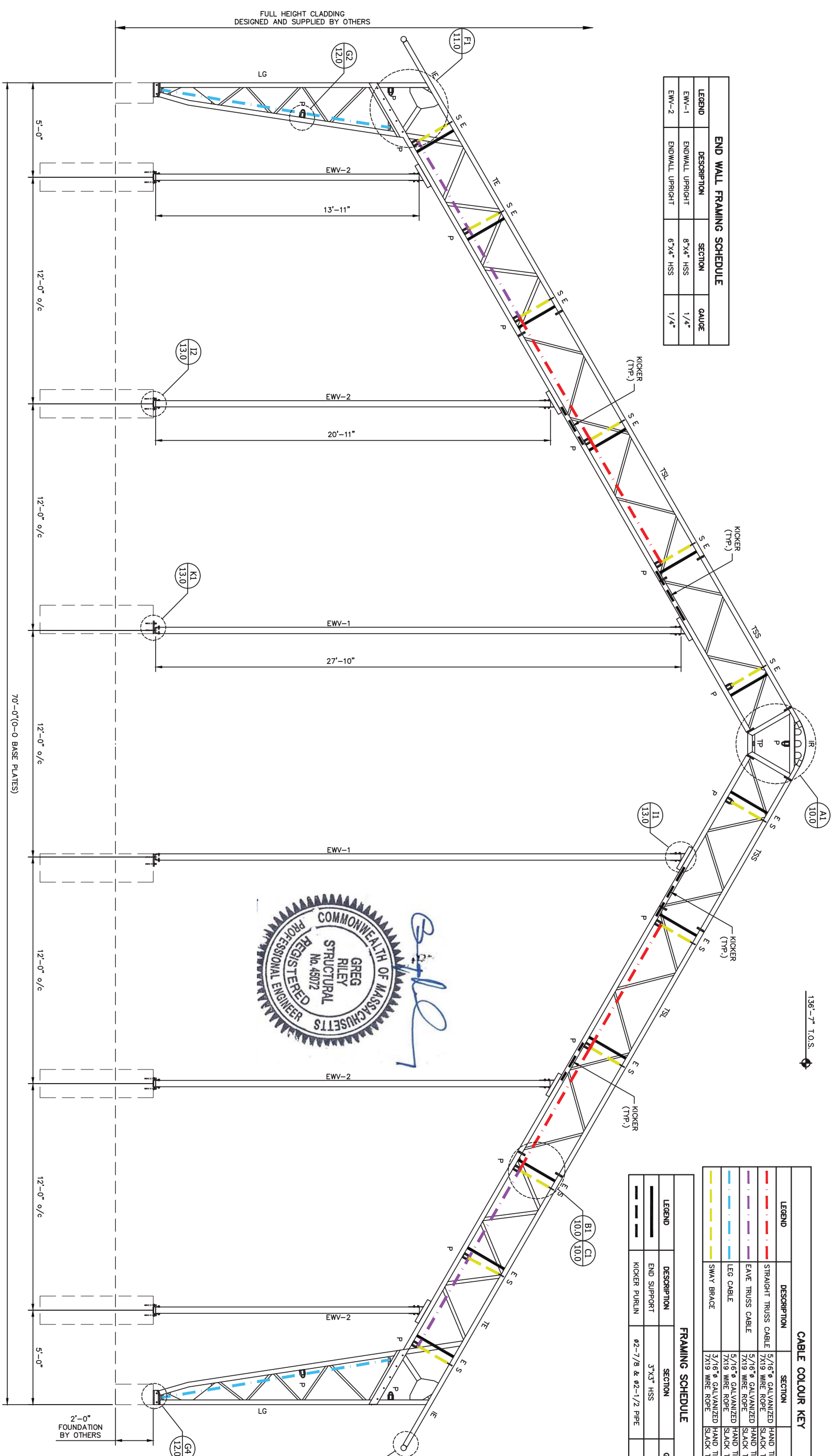
FOUNDATION DESIGNED AND SUPPLIED BY OTHERS

- GENERAL NOTES**
1. VERIFY ALL DIMENSIONS PRIOR TO CONSTRUCTION. RESOLVE DISCREPANCIES WITH THE BUILDING SUPPLIER.
 2. FINISHED FLOOR ELEVATION THIS SHEET = 100'-0" U.N.O.
 3. ALL CONCRETE COMPONENTS ARE DESIGNED AND SUPPLIED BY OTHERS

<p>Calhoun Superstructure Ltd. 3702 Bruce Rd #10 York, Ont M3J 2G6 905-263-3984 www.calhounsuperstructure.com</p>		<p>NAME: [] DATE: 12/08/2012 R W H: [] G R: 12/08/2012</p>
<p>1. ADDED RIDGE VENT PURLIN 23/07/2012 JMG, APR, R H</p>	<p>2. ADDED DETAIL CALL OUTS 23/07/2012 JMG, APR, R H</p>	<p>3. ADDED RIDGE VENT PURLIN 23/07/2012 JMG, APR, R H</p>
<p>1. ENGINEER'S APPROVAL 12/08/2012 [] THE ENGINEER'S APPROVAL IS FOR THE DESIGN AND CONSTRUCTION OF THE STRUCTURE SHOWN ON THIS SHEET. IT DOES NOT COVER THE DESIGN OR CONSTRUCTION OF ANY OTHER PARTS OF THE STRUCTURE. 2. CHECKED 12/08/2012 [] 3. DESIGNED 12/08/2012 []</p>		
<p>REVISION / ISSUE</p>		

FRAMING PLAN
 70" VP SERIES
 402757 VP 70X156 R2
 SCALE: 1/8" = 1' SHEET 6 OF 13

END WALL FRAMING SCHEDULE			
LEGEND	DESCRIPTION	SECTION	GAUGE
EW-1	ENDWALL UPRIGHT	8"X4" HSS	1/4"
EW-2	ENDWALL UPRIGHT	6"X4" HSS	1/4"



FRAMING NOTES

1. ENDWALL STRAPPING AND HARDWALL CLADDING DESIGNED AND SUPPLIED BY OTHERS. END WALL FRAMING DESIGNED TO LESS THAN L/180.
2. ALL STRAPPING AND HARDWALL CLADDING MUST BE DESIGNED TO MEET SITE WIND LOADS. LATERAL DRIFT DESIGNED TO LESS THAN H/180 AT 12'-6" (EAVES).
3. DOORS ARE DESIGNED AND SUPPLIED BY OTHERS. DOORS MUST BE DESIGNED TO WITHSTAND STRIPPING WIND LOADS THAT HAVE BEEN DESIGNED (EXCEEDING 70 KPH OR 44 MPH).

GENERAL NOTES

1. VERIFY ALL DIMENSIONS PRIOR TO CONSTRUCTION. RESOLVE DISCREPANCIES WITH THE BUILDING SUPPLIER.
2. FINISHED FLOOR ELEVATION THIS SHEET = 100'-0" U.N.O.
3. ALL CONCRETE COMPONENTS ARE DESIGNED AND SUPPLIED BY OTHERS

GRIDLINE 1

COMPONENT SCHEDULE

MARK	DESCRIPTION	CHORDS	WEBS	BOLTS	COMMENTS
TSS	TRUSS STRAIGHT SHORT	3"X3"X1/8"	U 1.5"X1.25"X11GA	5/8" GR 5	ALL STEEL F _y =50 KSI HOT DIP GALVANIZED TO MIN. CSA G164/ASTM A123-09
TSL	TRUSS STRAIGHT LONG	3"X3"X1/8"	U 1.5"X1.25"X11GA	5/8" GR 5	ALL STEEL F _y =50 KSI HOT DIP GALVANIZED TO MIN. CSA G164/ASTM A123-09
TE	TRUSS EAVE	3"X3"X3/16" INSIDE CHORD 3"X3"X1/8" OUTSIDE CHORD	U 1.5"X1.25"X11GA	5/8" GR 5	ALL STEEL F _y =50 KSI HOT DIP GALVANIZED TO MIN. CSA G164/ASTM A123-09
LG	LEG	3"X3"X3/16" INSIDE CHORD 3"X3"X1/8" OUTSIDE CHORD	U 1.5"X1.25"X11GA	5/8" GR 5	ALL STEEL F _y =50 KSI HOT DIP GALVANIZED TO MIN. CSA G164/ASTM A123-09
TP	TRUSS PEAK	3"X3"X1/8"	---	5/8" GR 5	ALL STEEL F _y =50 KSI HOT DIP GALVANIZED TO MIN. CSA G164/ASTM A123-09
IR	INSERT ROUND	PLATE	---	1/2" GR 5	ALL STEEL F _y =50 KSI HOT DIP GALVANIZED TO MIN. CSA G164/ASTM A123-09
IE	INSERT EAVE	PLATE	---	1/2" GR 5	ALL STEEL F _y =50 KSI HOT DIP GALVANIZED TO MIN. CSA G164/ASTM A123-09

CABLE COLOUR KEY			PRE-TENSION
LEGEND	DESCRIPTION	SECTION	PRE-TENSION
---	STRAIGHT TRUSS CABLE	5/16" GALVANIZED WIRE ROPE	HAND TIGHT + 6-1/2 TURNS, THEN TURN TO SLACK THEN HAND TIGHT + 7/8 TURNS
---	EAVE TRUSS CABLE	5/16" GALVANIZED WIRE ROPE	HAND TIGHT + 6 TURNS, THEN TURN TO SLACK THEN HAND TIGHT + 5/4 TURNS
---	LEG CABLE	5/16" GALVANIZED WIRE ROPE	HAND TIGHT + 8 TURNS, THEN TURN TO SLACK THEN HAND TIGHT + 1-5/8 TURNS
---	SWAY BRACE	3/16" GALVANIZED WIRE ROPE	HAND TIGHT + 4-1/2 TURNS, THEN TURN TO SLACK THEN HAND TIGHT + 1 TURN

FRAMING SCHEDULE				
LEGEND	DESCRIPTION	SECTION	GAUGE	COMMENTS
---	END SUPPORT	3"X3" HSS	11	END BAYS ONLY
---	KICKER PURLIN	Ø2-7/8 & Ø2-1/2 PIPE	14	END BAY ONLY

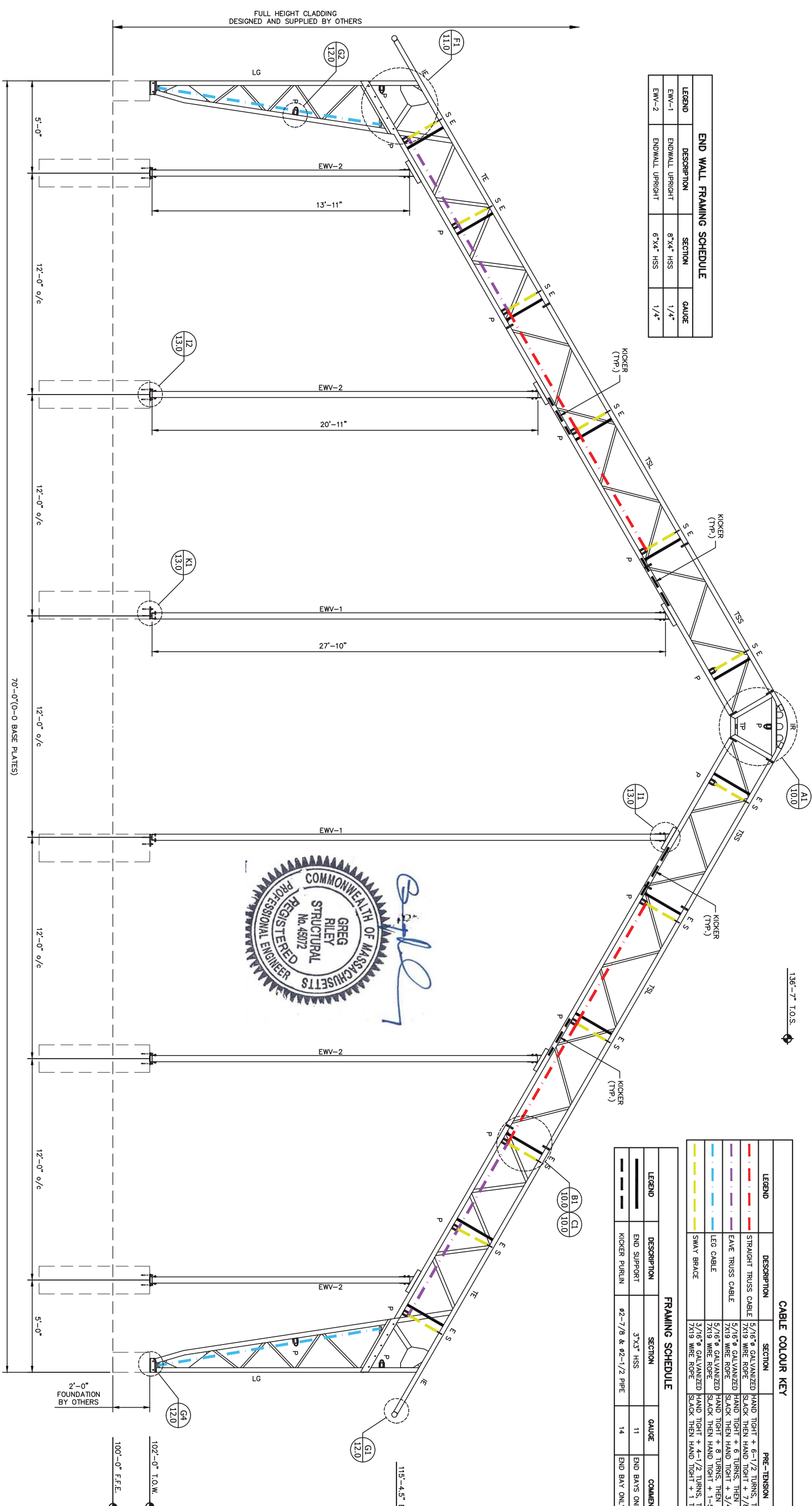


FOUNDATION DESIGNED AND SUPPLIED BY OTHERS
CALHOUN SUPERSTRUCTURE
ELEVATION A-A
70" VP SERIES
402757 VP 70X156 R2
7.0
 SCALE: 3/8" = 1' (SHEET 7 OF 13)

No.	DESCRIPTION	DATE	REVISION / ISSUE
1	ENGINEER APPROVAL	12/08/2012	
	DESIGN APPROVAL	12/08/2012	

Calhoun Superstructure Ltd.
 3702 Bruce Rd #10
 Suite 200
 800-265-3984
 www.calhounsuperstructure.com

END WALL FRAMING SCHEDULE			
LEGEND	DESCRIPTION	SECTION	GAUGE
EW-1	ENDWALL UPRIGHT	6"X4" HSS	1/4"
EW-2	ENDWALL UPRIGHT	6"X4" HSS	1/4"



FRAMING NOTES

1. ENDWALL STRAPPING AND HARDWALL CLADDING DESIGNED AND SUPPLIED BY OTHERS. END WALL FRAMING DESIGNED TO LESS THAN L/180.
2. ALL STRAPPING AND HARDWALL CLADDING MUST BE DESIGNED TO MEET SITE WIND LOADS. LATERAL DRIFT DESIGNED TO LESS THAN H/180 AT 12'-6" (EAVES).
3. DOORS ARE DESIGNED AND SUPPLIED BY OTHERS. DOORS MUST BE DESIGNED TO WITHSTAND STRIPPING WIND LOADS THAT HAVE BEEN DESIGNED EXCEEDING 70 KPH OR 44 MPH.

GENERAL NOTES

1. VERIFY ALL DIMENSIONS PRIOR TO CONSTRUCTION. RESOLVE DISCREPANCIES WITH THE BUILDING SUPPLIER.
2. FINISHED FLOOR ELEVATION THIS SHEET = 100'-0" U.N.O.
3. ALL CONCRETE COMPONENTS ARE DESIGNED AND SUPPLIED BY OTHERS

GRIDLINE 14

COMPONENT SCHEDULE

MARK	DESCRIPTION	CHORDS	WEBS	BOLTS	COMMENTS
TSS	TRUSS STRAIGHT SHORT	3"X3"X1/8"	U 1.5"X1.25"X11GA	5/8" GR 5	ALL STEEL F _y =50 KSI HOT DIP GALVANIZED TO MIN. CSA G164/ASTM A123-09
TSL	TRUSS STRAIGHT LONG	3"X3"X1/8"	U 1.5"X1.25"X11GA	5/8" GR 5	ALL STEEL F _y =50 KSI HOT DIP GALVANIZED TO MIN. CSA G164/ASTM A123-09
TE	TRUSS EAVE	3"X3"X3/16" INSIDE CHORD 3"X3"X1/8" OUTSIDE CHORD	U 1.5"X1.25"X11GA	5/8" GR 5	ALL STEEL F _y =50 KSI HOT DIP GALVANIZED TO MIN. CSA G164/ASTM A123-09
LG	LEG	3"X3"X3/16" INSIDE CHORD 3"X3"X1/8" OUTSIDE CHORD	U 1.5"X1.25"X11GA	5/8" GR 5	ALL STEEL F _y =50 KSI HOT DIP GALVANIZED TO MIN. CSA G164/ASTM A123-09
TP	TRUSS PEAK	3"X3"X1/8"	---	5/8" GR 5	ALL STEEL F _y =50 KSI HOT DIP GALVANIZED TO MIN. CSA G164/ASTM A123-09
IR	INSERT ROUND	PLATE	---	1/2" GR 5	ALL STEEL F _y =50 KSI HOT DIP GALVANIZED TO MIN. CSA G164/ASTM A123-09
IE	INSERT EAVE	PLATE	---	1/2" GR 5	ALL STEEL F _y =50 KSI HOT DIP GALVANIZED TO MIN. CSA G164/ASTM A123-09



136'-7" T.O.S.

CABLE COLOUR KEY			PRE-TENSION
LEGEND	DESCRIPTION	SECTION	PRE-TENSION
---	STRAIGHT TRUSS CABLE	5/16" GALVANIZED WIRE ROPE	HAND TIGHT + 6-1/2 TURNS, THEN TURN TO SLACK THEN HAND TIGHT + 7/8 TURNS
---	EAVE TRUSS CABLE	5/16" GALVANIZED WIRE ROPE	HAND TIGHT + 6 TURNS, THEN TURN TO SLACK THEN HAND TIGHT + 5/4 TURNS
---	LEG CABLE	5/16" GALVANIZED WIRE ROPE	HAND TIGHT + 8 TURNS, THEN TURN TO SLACK THEN HAND TIGHT + 1-5/8 TURNS
---	SWAY BRACE	3/16" GALVANIZED WIRE ROPE	HAND TIGHT + 4-1/2 TURNS, THEN TURN TO SLACK THEN HAND TIGHT + 1 TURN

FRAMING SCHEDULE				
LEGEND	DESCRIPTION	SECTION	GAUGE	COMMENTS
---	END SUPPORT	3"X3" HSS	11	END BAYS ONLY
---	KICKER PURLIN	Ø2-7/8 & Ø2-1/2 PIPE	14	END BAY ONLY

FOUNDATION DESIGNED AND SUPPLIED BY OTHERS

CALHOUN SUPERSTRUCTURE

ELEVATION B-B
70" VP SERIES
402757 VP 70X156 R2

Scale: 3/8" = 1' (SECT) 8" = 13'

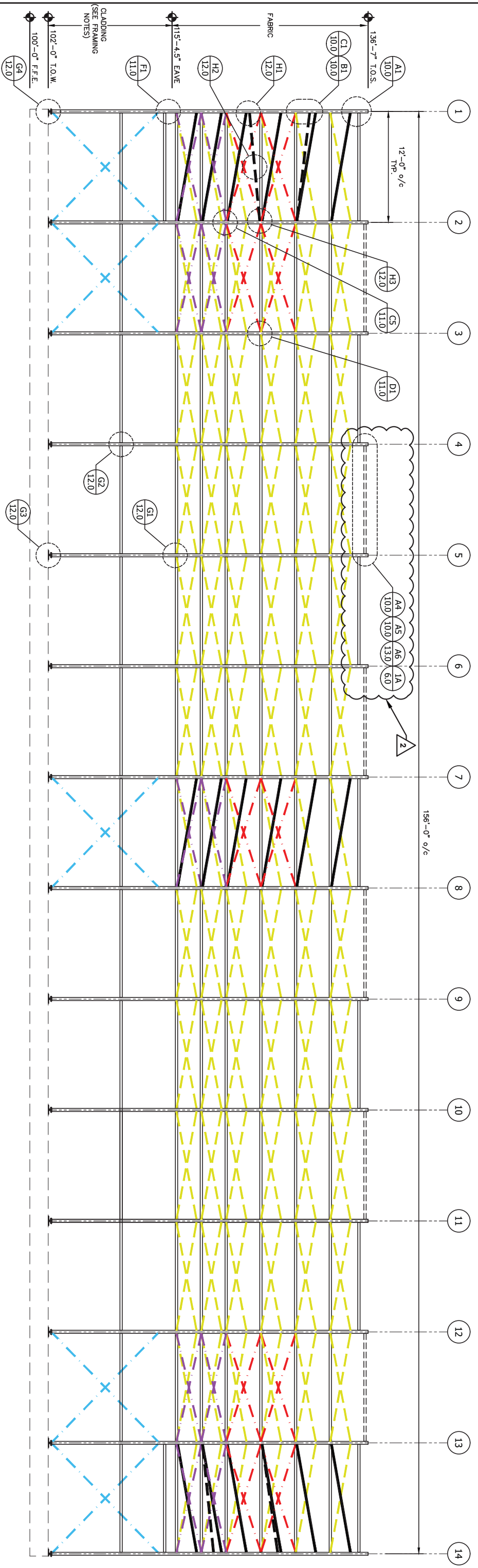
8.0

12/08/2012
 12/08/2012
 12/08/2012

3702 Route Rd #10
 Suite 200
 800-265-3984
 www.calhounsuperstructure.com

DATE: 12/08/2012
 NAME: dd/mm/yyyy
 DRAWMAN: R H
 CHECKED: R H
 ENG. APRR. O R

THE ENGINEER CERTAINS HIS DESIGN COMPLIES WITH ALL APPLICABLE CODES AND STANDARDS AND ACCEPTS RESPONSIBILITY FOR THE DESIGN WITHOUT THE LIMITS OF THIS DRAWING.



GRIDLINE A AND B

FRAMING NOTES

1. ENDWALL STRAPPING AND HARDWALL CLADDING DESIGNED AND SUPPLIED BY OTHERS. END WALL FRAMING DESIGNED TO LESS THAN L/180.
2. ALL STRAPPING AND HARDWALL CLADDING MUST BE DESIGNED TO MEET SITE WIND LOADS. LATERAL DRIFT DESIGNED TO LESS THAN H/180 AT 12'-6" (EAVES).

GENERAL NOTES

1. VERIFY ALL DIMENSIONS PRIOR TO CONSTRUCTION. RESOLVE DISCREPANCIES WITH THE BUILDING SUPPLIER.
2. FINISHED FLOOR ELEVATION THIS SHEET = 100'-0" U.N.O.
3. ALL CONCRETE COMPONENTS ARE DESIGNED AND SUPPLIED BY OTHERS

CABLE COLOUR KEY

LEGEND	DESCRIPTION	SECTION	PRE-TENSION
	STRAIGHT TRUSS CABLE	5/16" ϕ GALVANIZED 7X19 WIRE ROPE	HAND TIGHT + 6-1/2 TURNS, THEN TURN TO SLACK THEN HAND TIGHT + 7/8 TURNS
	EAVE TRUSS CABLE	5/16" ϕ GALVANIZED 7X19 WIRE ROPE	HAND TIGHT + 6 TURNS, THEN TURN TO SLACK THEN HAND TIGHT + 3/4 TURNS
	LEG CABLE	5/16" ϕ GALVANIZED 7X19 WIRE ROPE	HAND TIGHT + 8 TURNS, THEN TURN TO SLACK THEN HAND TIGHT + 1-5/8 TURNS
	SWAY BRACE	3/16" ϕ GALVANIZED 7X19 WIRE ROPE	HAND TIGHT + 4-1/2 TURNS, THEN TURN TO SLACK THEN HAND TIGHT + 1 TURN

FRAMING SCHEDULE

LEGEND	DESCRIPTION	SECTION	GUAGE	COMMENTS
	TYPICAL PURLIN	3"x3" HSS	14	ALL BAYS
	RIDGE VENT PURLIN	3"x2" HSS	14	OPEN RIDGE BAY ONLY
	END SUPPORT	3"x3" HSS	11	END BAYS ONLY
	TENSION TUBE	3-1/2" ϕ	11	ALL BAYS
	KICKER PURLIN	2-7/8 & 2-1/2 PIPE	14	END BAY ONLY



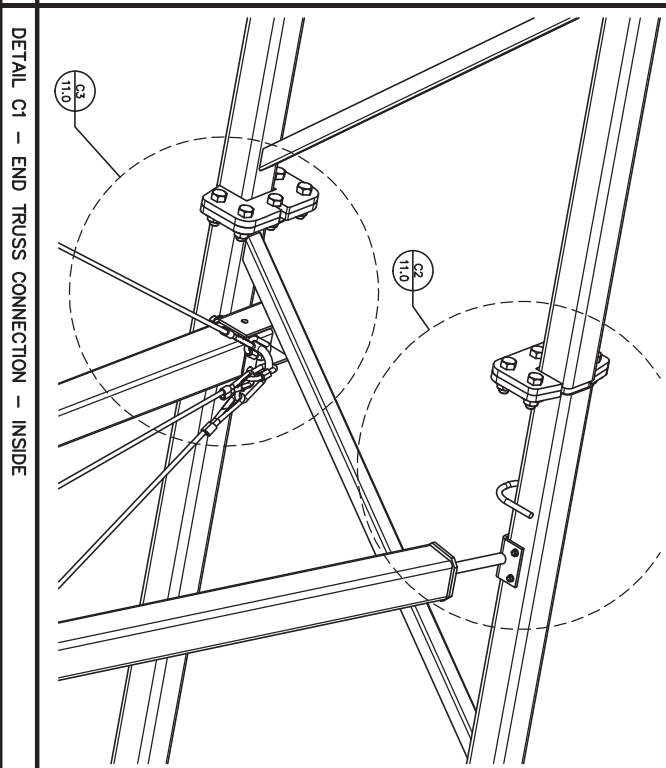
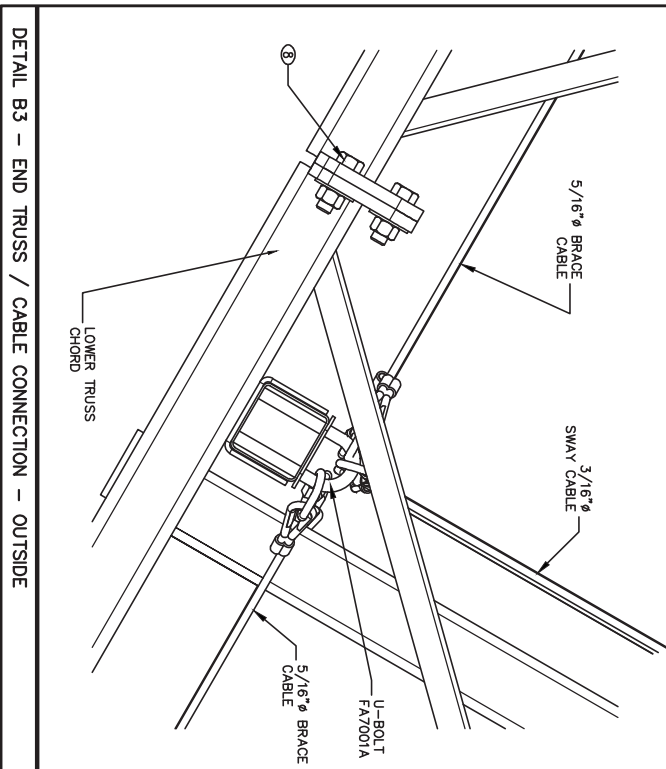
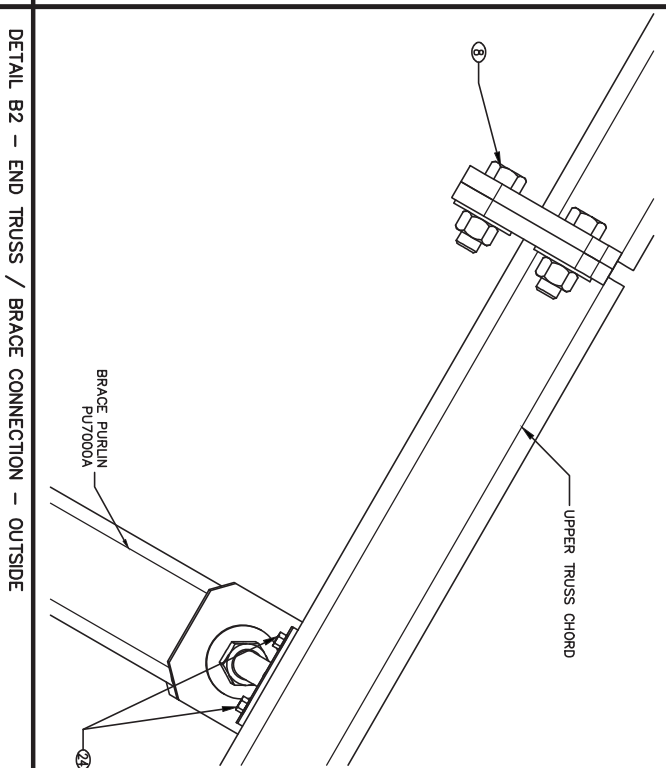
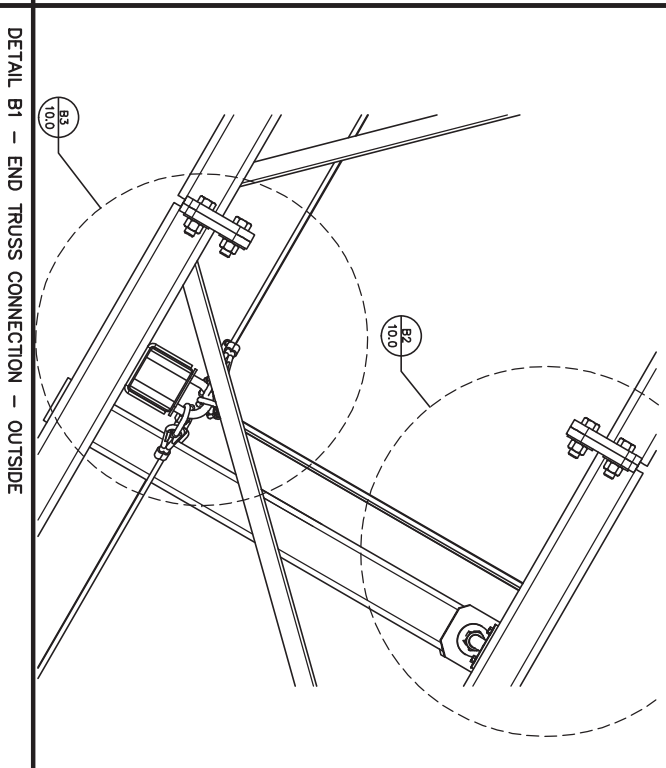
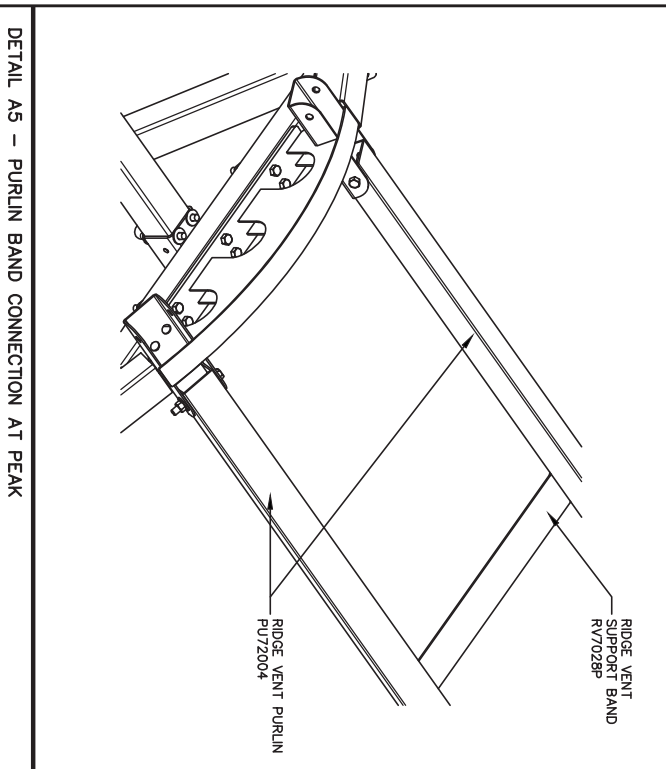
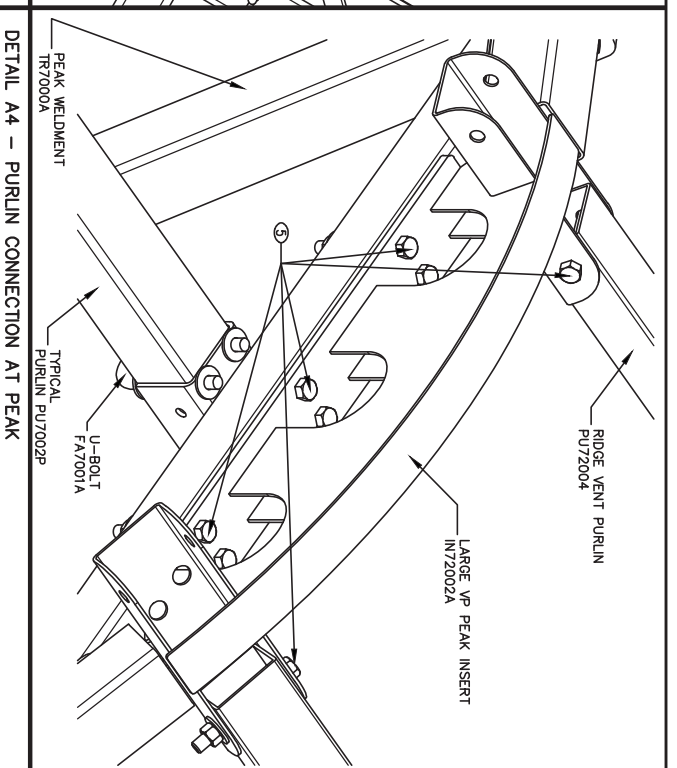
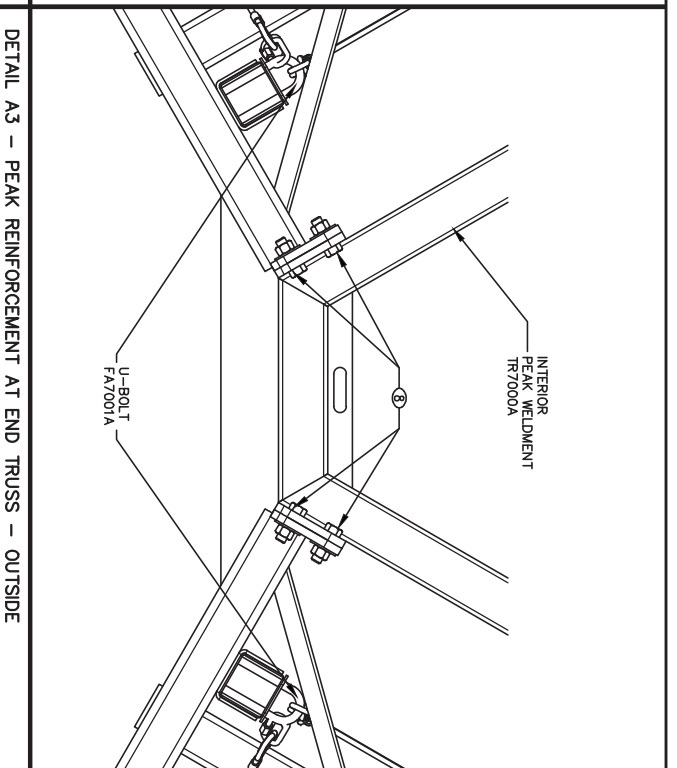
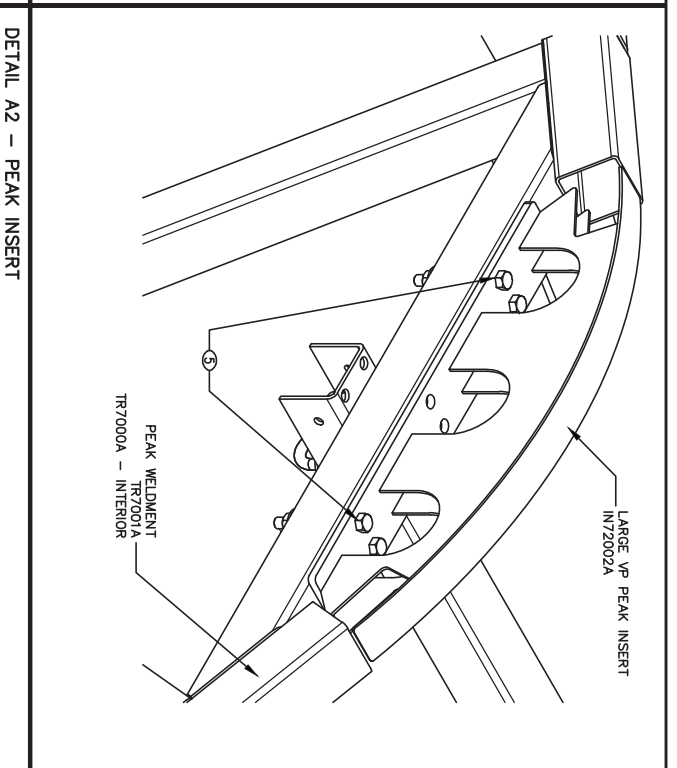
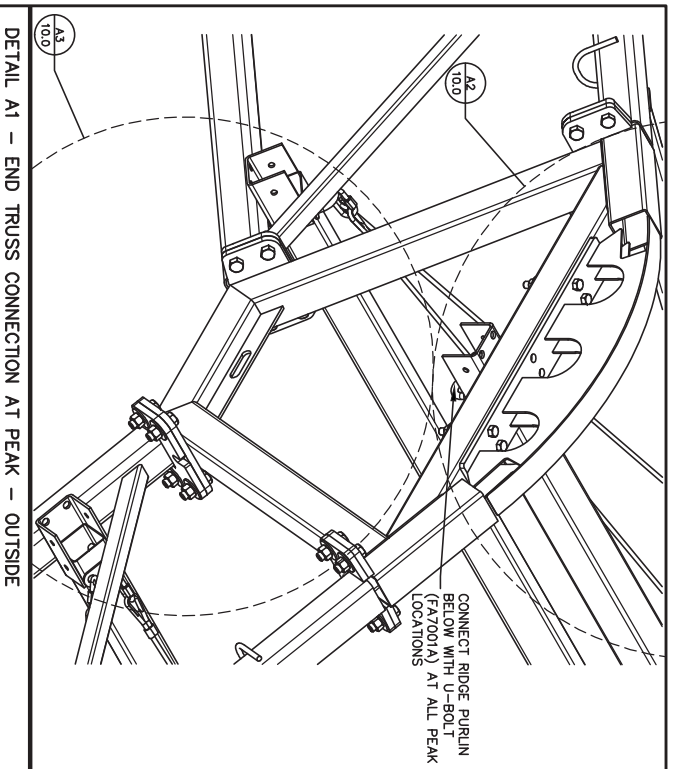
FOUNDATION DESIGNED AND SUPPLIED BY OTHERS

Calhoun Superstructure Ltd. 3702 Bruce Rd #10 Unit 200 800-265-3984 www.calhounsuperstructure.com		DRAWN: RWH DATE: 12/08/2012
CHECKED: RWH DATE: 12/08/2012		PROJECT AND COMPANY: THE SUPERSTRUCTURE COMPANY DRAWING NO: 402757 VP 70X156 R2 FOUNDATION SUPERSTRUCTURE: ANY WHILE WITHOUT THE WRITTEN PERMISSION OF CALHOUN SUPERSTRUCTURE LTD.
1. ADDED RIDGE VENT PURLIN 23/07/2012 2. ADDED DETAIL CALL OUTS 23/07/2012 3. ENGINEER APPROVAL 12/08/2012		REVISION / ISSUE No. DESCRIPTION DATE



ELEVATION C-C
 70' VP SERIES
 402757 VP 70X156 R2

SCALE: 3/16" = 1' (SEE 9 OF 13)
9.0



HARDWARE SCHEDULE (AS OCCURS)

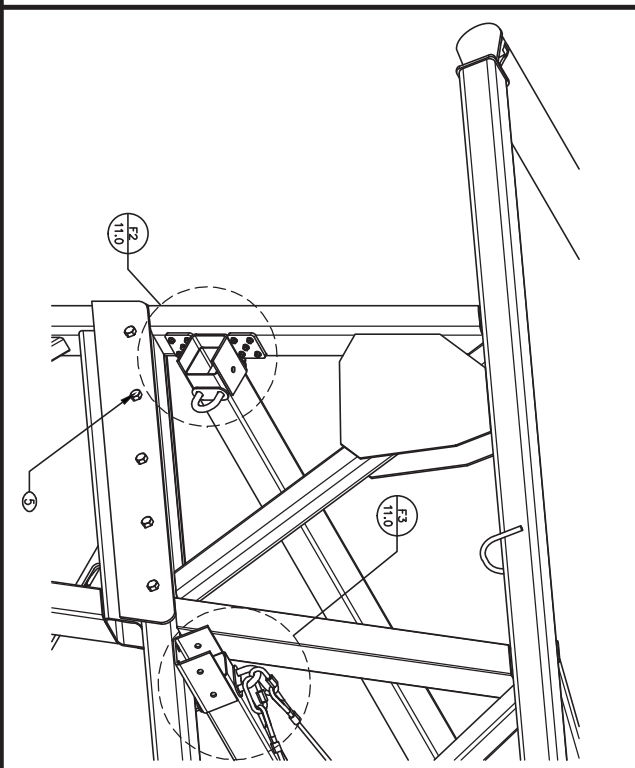
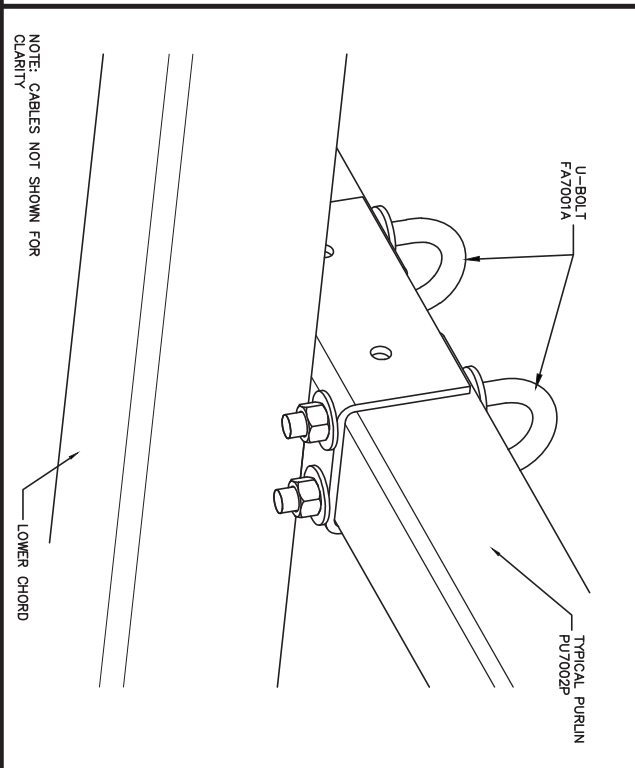
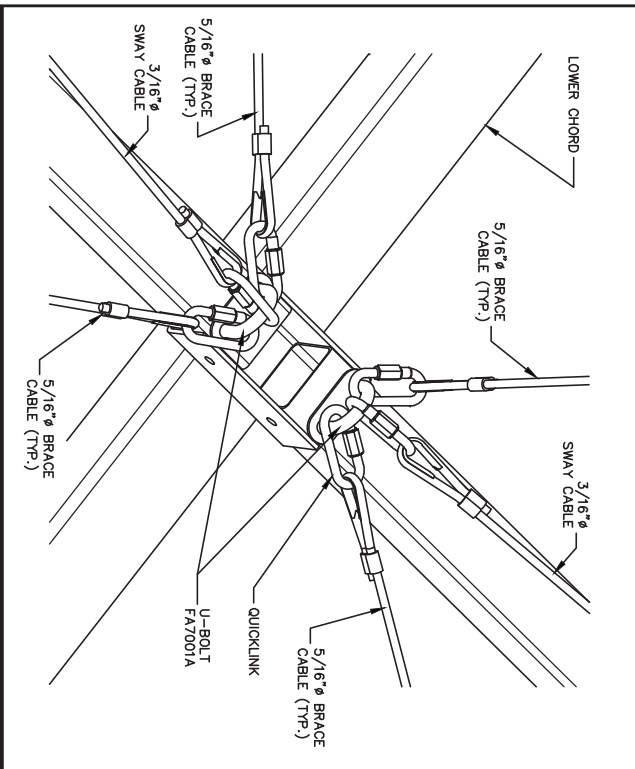
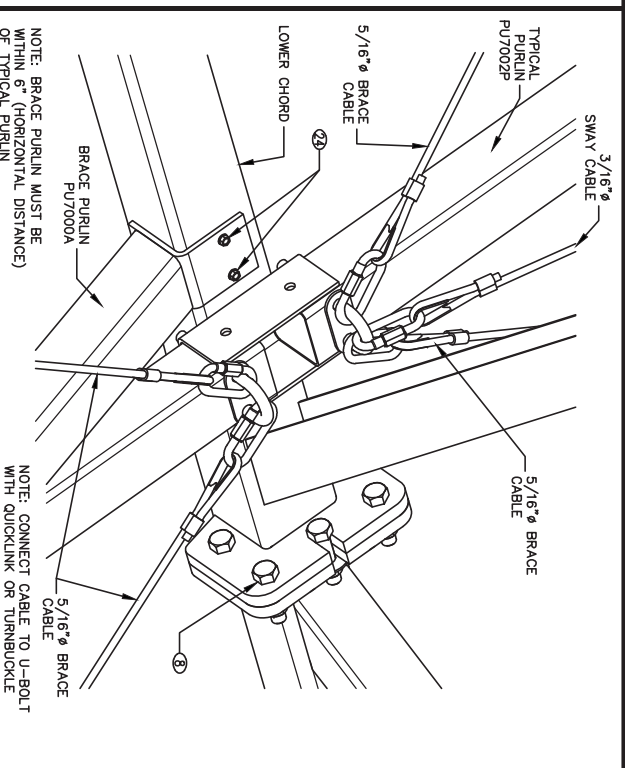
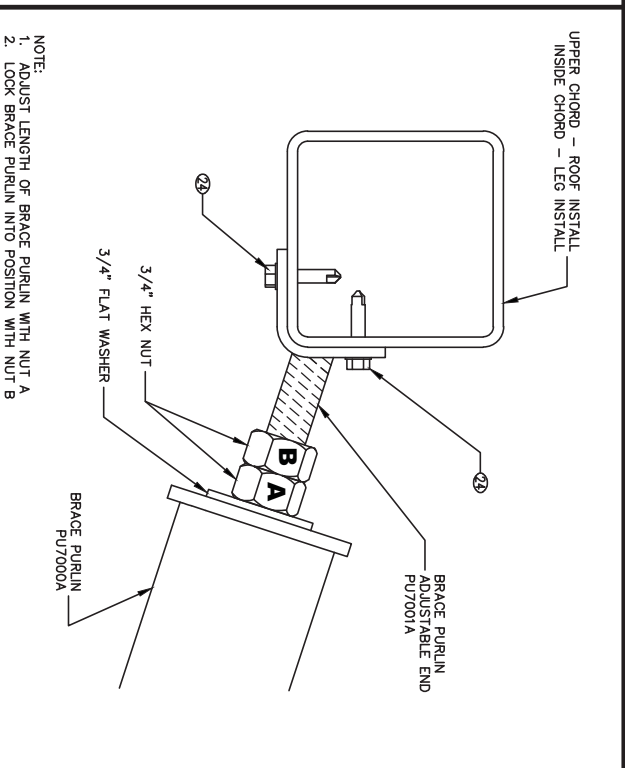
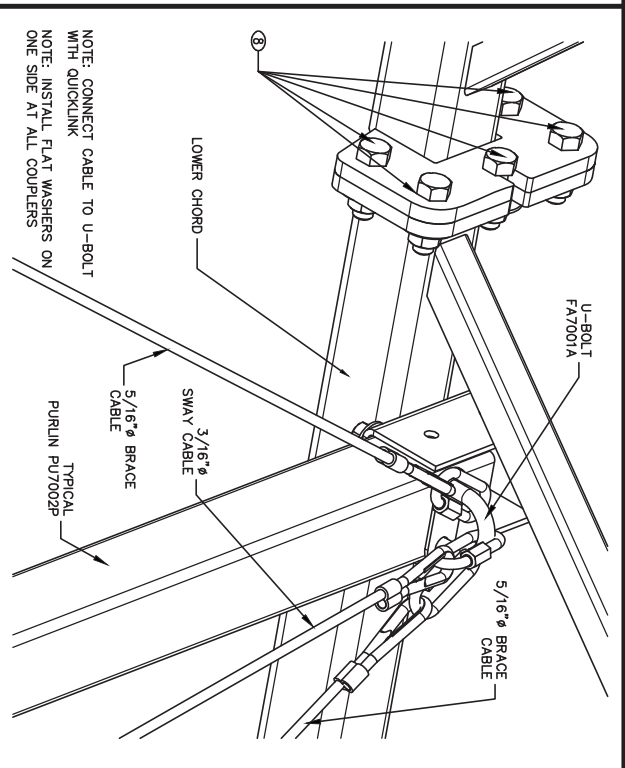
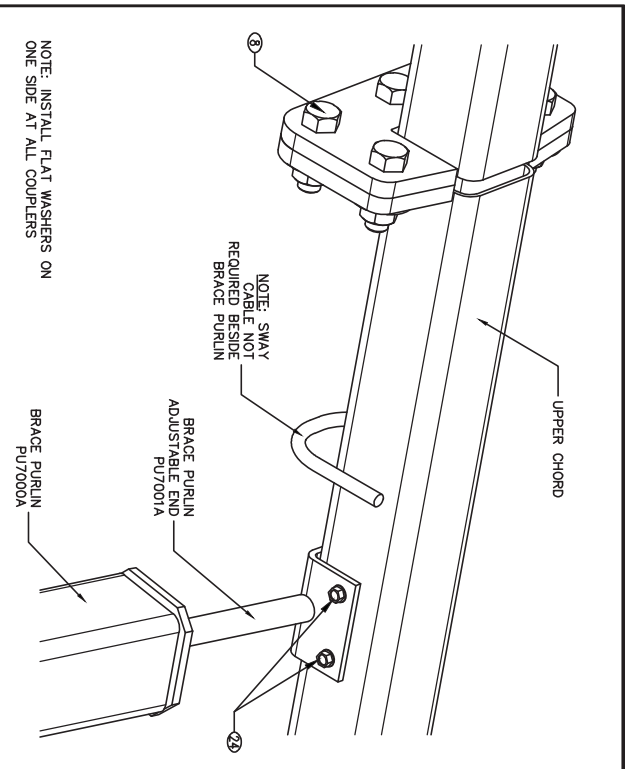
ITEM No.	DESCRIPTION	PART No.
	HEX BOLT 1/2 X 1-1/2	FA0011P
	HEX BOLT 1/2 X 2	FA0010P
	HEX BOLT 1/2 X 3-1/2	FA0008P
	HEX BOLT 1/2 X 4	FA0009P
5	HEX BOLT 1/2 X 4-1/2	FA0078P
	HEX BOLT 1/2 X 5	FA0010P
	HEX BOLT 1/2 X 5-1/2	FA0080P
8	HEX BOLT 5/8 X 2	FA0081P
	HEX BOLT 5/8 X 2-1/2	FA0082P
	HEX BOLT 5/8 X 4	FA0058P
	HEX BOLT 5/8 X 6	FA0016P
	HEX BOLT 3/4 X 3	FA0077P
	HEX BOLT 3/4 X 5	FA0005P
	HEX BOLT 1-1/4 X 4-1/2	FA0019P
	CARRIAGE BOLT 3/8 X 1	FA0098P
	CARRIAGE BOLT 3/8 X 4	FA0013P
	CARRIAGE BOLT 3/8 X 4-1/2	FA0012P
	CARRIAGE BOLT 1/2 X 4-1/2	FA0138P
	CARRIAGE BOLT 1/2 X 5	FA0127P
	CARRIAGE BOLT 1/2 X 5-1/2	FA0101P
	CARRIAGE BOLT 5/8 X 1-1/2	FA0142P
	CARRIAGE BOLT 5/8 X 6	FA0117P
24	TEK SCREW 1/4 X 1-1/4	FA0089P
	TEK SCREW 1/4 X 1-1/2	FA0012P
	TEK SCREW 1/4 X 1-1/2 GAS	FA0147P
	TEK SCREW 12-24 X 1-1/4	FA0147P
	SOCKET HEAD SHOULDER SCREW 3/8 X 5/8	FA0079P
	SOCKET HEAD SHOULDER SCREW 3/8 X 1	FA0008P
	CONCRETE ANCHORS BY OTHERS	---



<p>Calhoun Superstructure Ltd. 3702 Bruce Rd #10 York, Ont. M9W 2M0 905-265-3984 www.calhounsuperstructure.com</p>		<p>DATE: 12/08/2012 DRAWN: RWH CHECKED: RWH ENGR. APPROV. G.R. DATE: 12/08/2012</p>	
<p>PROPERTY AND COPYRIGHT RESERVED BY CALHOUN SUPERSTRUCTURE LTD. NO PART OF THIS DOCUMENT IS TO BE REPRODUCED OR TRANSMITTED IN ANY FORM OR BY ANY MEANS, WITHOUT THE WRITTEN PERMISSION OF CALHOUN SUPERSTRUCTURE LTD.</p>		<p>SCALE: 10.0 SHEET: 10 OF 13 N T S</p>	

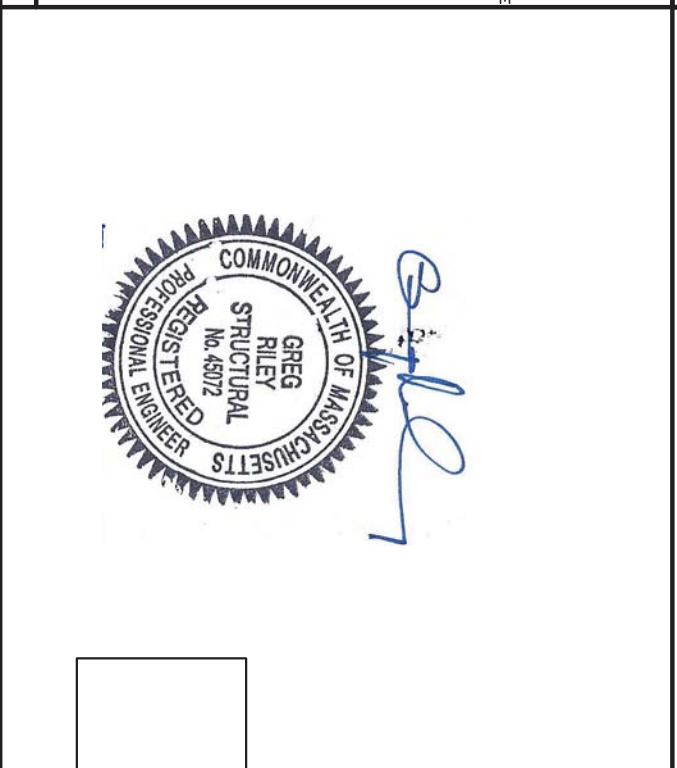
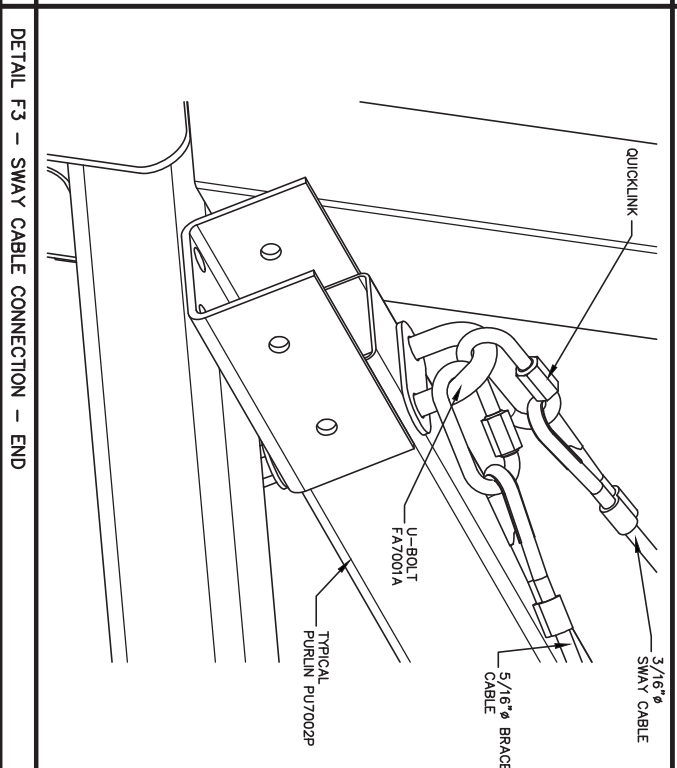
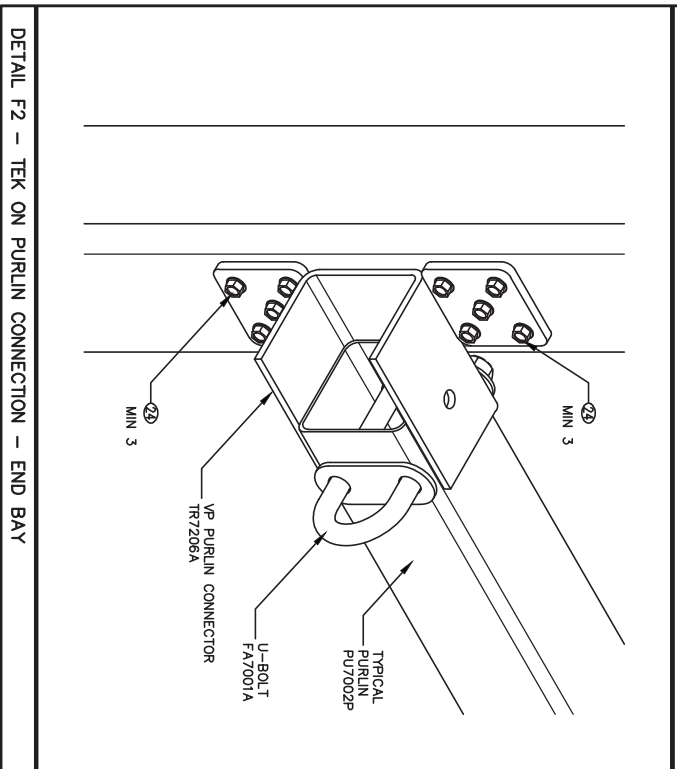
DETAILS
 70' VP SERIES
 402757 VPE 70X156 R2

CALHOUN
 SUPERSTRUCTURE



HARDWARE SCHEDULE (AS OCCURS)

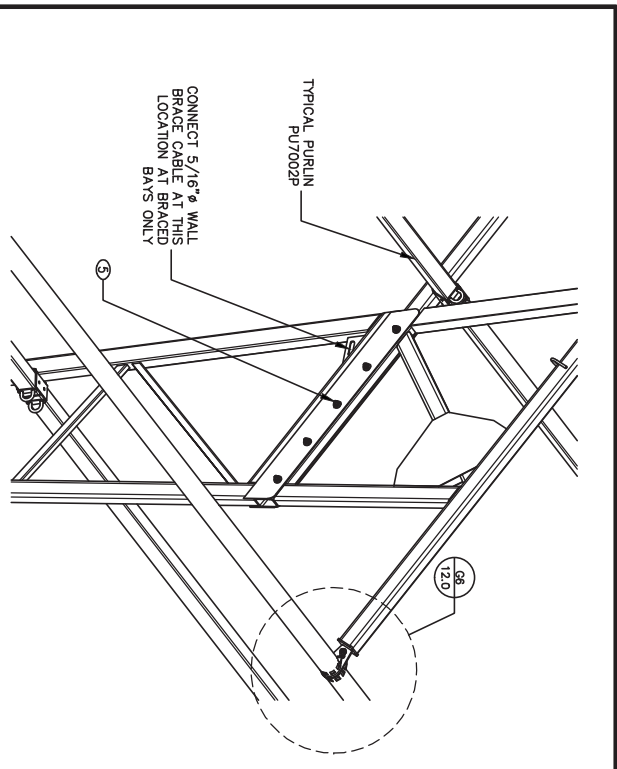
ITEM No.	DESCRIPTION	PART No.
	HEX BOLT 1/2 X 1-1/2	FA0011P
	HEX BOLT 1/2 X 2	FA0100P
	HEX BOLT 1/2 X 3-1/2	FA0006P
	HEX BOLT 1/2 X 4	FA0009P
5	HEX BOLT 1/2 X 4-1/2	FA0078P
	HEX BOLT 1/2 X 5	FA0010P
	HEX BOLT 1/2 X 5-1/2	FA0080P
8	HEX BOLT 5/8 X 2-1/2	FA0082P
	HEX BOLT 5/8 X 4	FA0055P
	HEX BOLT 5/8 X 6	FA0101P
	HEX BOLT 3/4 X 3	FA0077P
	HEX BOLT 1-1/4 X 4-1/2	FA0005P
	CARRIAGE BOLT 3/8 X 1	FA0099P
	CARRIAGE BOLT 3/8 X 4	FA0103P
	CARRIAGE BOLT 3/8 X 4-1/2	FA0102P
	CARRIAGE BOLT 1/2 X 4-1/2	FA0138P
	CARRIAGE BOLT 1/2 X 5	FA0127P
20	CARRIAGE BOLT 5/8 X 1-1/2 Z	FA0101P
	CARRIAGE BOLT 5/8 X 6	FA0142P
	CARRIAGE BOLT 5/8 X 1-1/2	FA0101P
24	TEK SCREW 1/4 X 1-1/4	FA0085P
	TEK SCREW 1/4 X 1-1/2 GAS	FA0002P
	TEK SCREW 12-24 X 1-1/4	FA0147P
	SOCKET HEAD SHOULDER SCREW 3/8 X 5/8	FA0079P
	SOCKET HEAD SHOULDER SCREW 3/8 X 1	FA0008P
	CONCRETE ANCHORS BY OTHERS	---



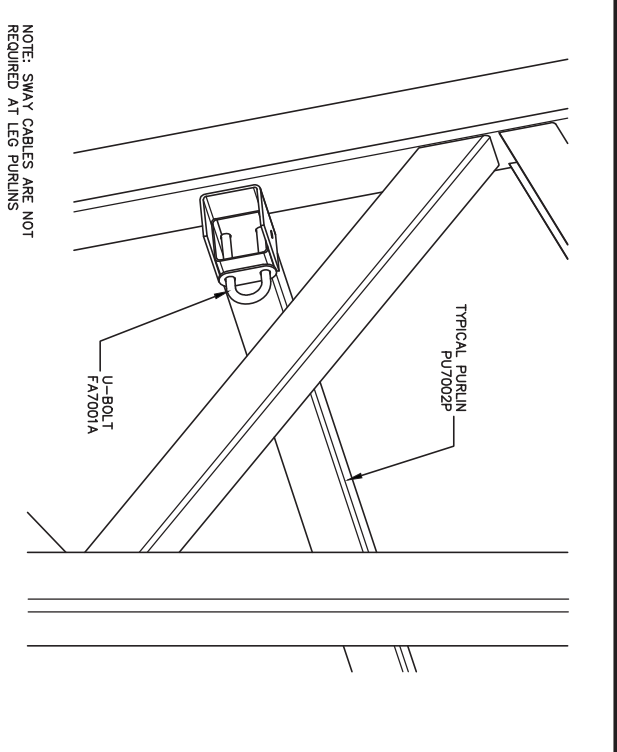
<p>Calhoun Superstructure Ltd. 3702 Route Rd #10 York, ME 04090 800-265-3984 www.calhounsuperstructure.com</p>		<p>DATE: 12/06/2012 NAME: RWH RWH 12/06/2012 CHECKED: RWH 12/06/2012 ENG. APRR. OR: 12/06/2012</p>	
<p>12/06/2012 ENGINEER APPROVAL</p>		<p>PROFESSIONAL AND COMMERCIAL THE ENGINEER CONTRACTOR IN THIS CAPTION SUBSCRIBING ANY WHILE WITHOUT THE WRITTEN PERMISSION OF CALHOUN SUPERSTRUCTURE LTD.</p>	
<p>REVISION / ISSUE</p>		<p>SCALE: N T S 1 OF 13</p>	

DETAILS
 70' VP SERIES
 402757 VP 70X156 R2

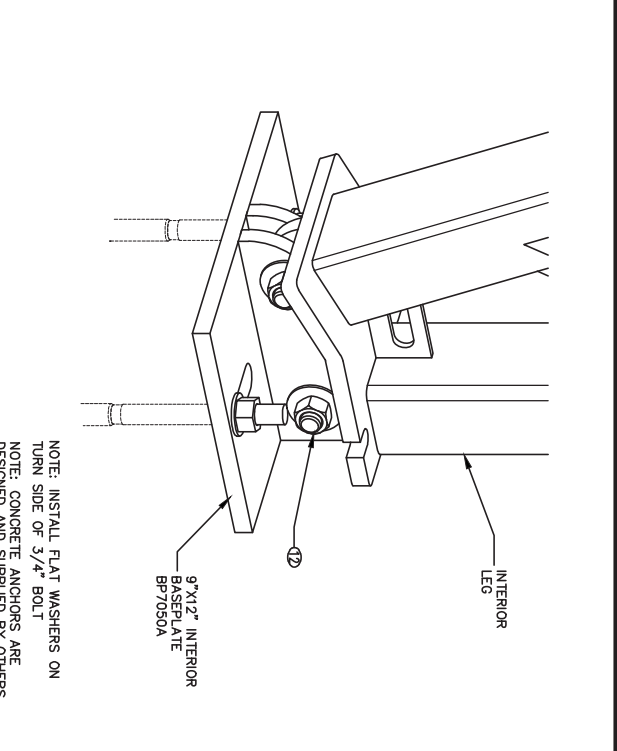
CALHOUN SUPERSTRUCTURE



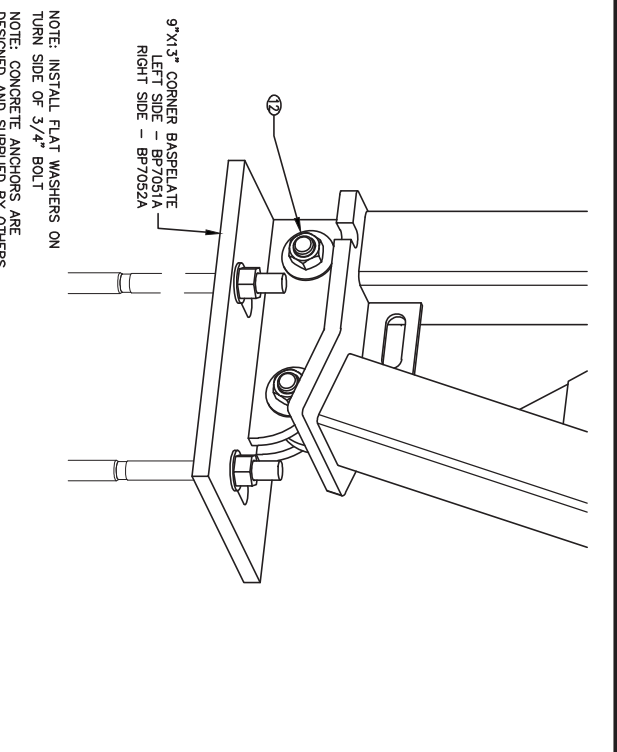
DETAIL G1 - LEG TO EAVE CONNECTION - INTERIOR



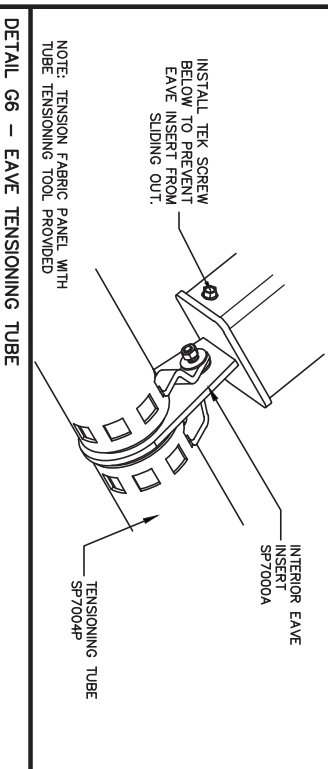
DETAIL G2 - LEG PURLIN CONNECTION



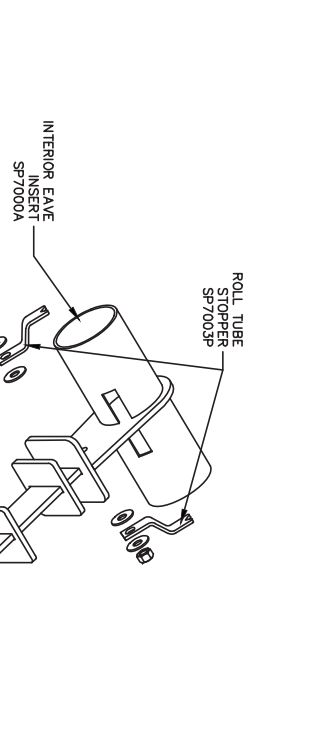
DETAIL G3 - STANDARD BASEPLATE - INSIDE VIEW



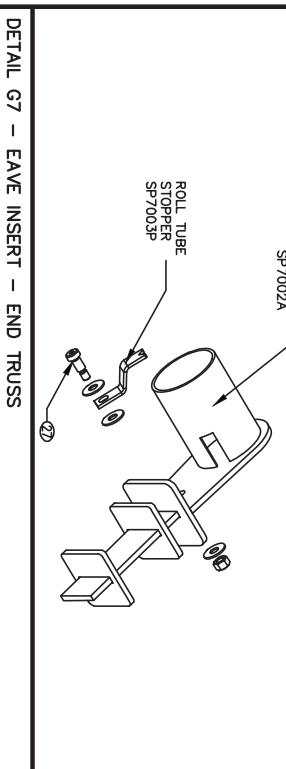
DETAIL G4 - CORNER BASEPLATE - INSIDE VIEW OF CLOSED END



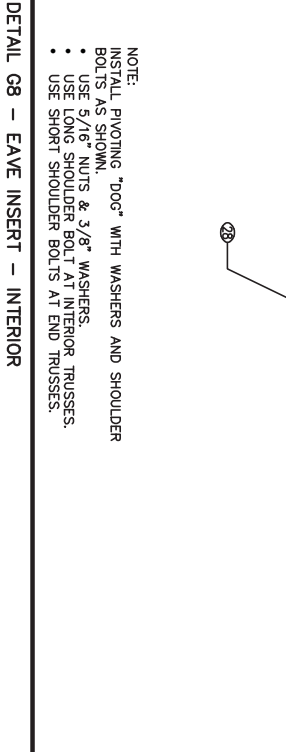
DETAIL G6 - EAVE TENSIONING TUBE



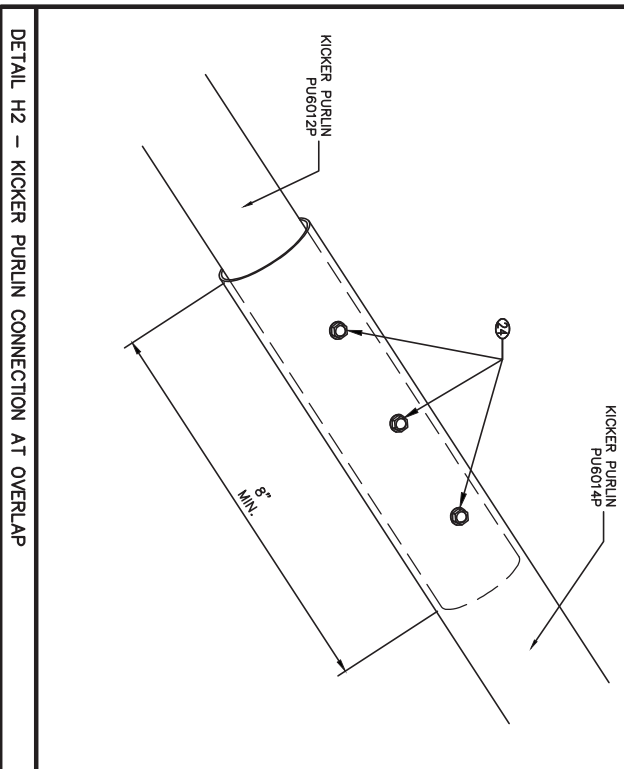
DETAIL G8 - EAVE INSERT - INTERIOR



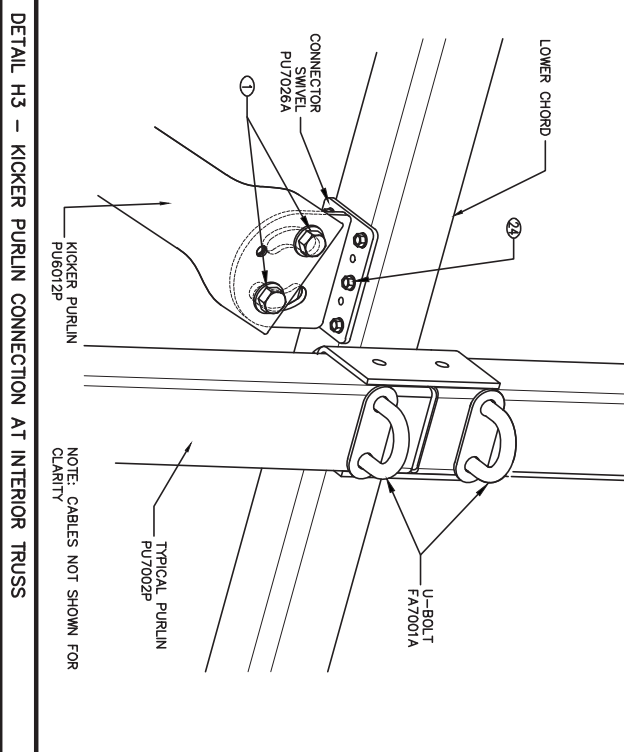
DETAIL G7 - EAVE INSERT - END TRUSS



DETAIL H1 - KICKER PURLIN CONNECTION AT END



DETAIL H2 - KICKER PURLIN CONNECTION AT OVERLAP

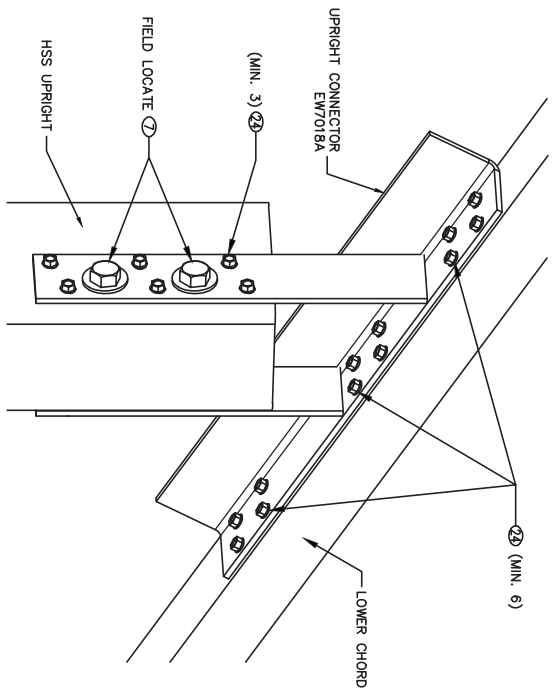


DETAIL H3 - KICKER PURLIN CONNECTION AT INTERIOR TRUSS

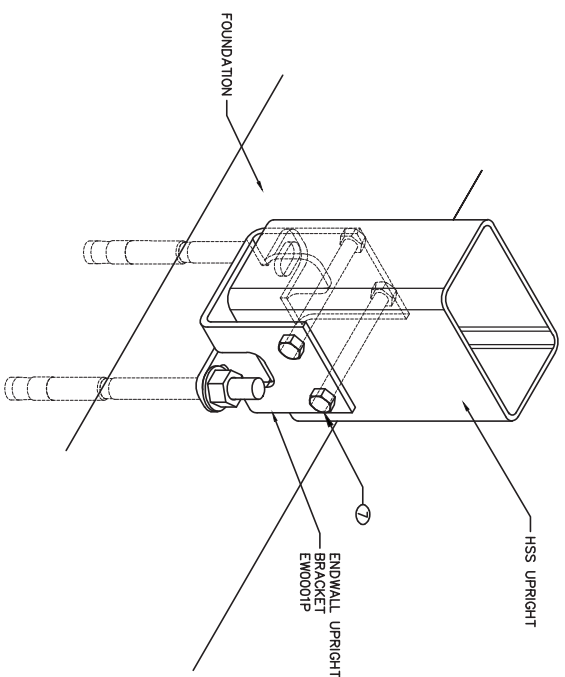
ITEM No.	DESCRIPTION	PART No.
1	HEX BOLT 1/2 X 1-1/2	FA0011P
	HEX BOLT 1/2 X 2	FA0100P
	HEX BOLT 1/2 X 3-1/2	FA0008P
	HEX BOLT 1/2 X 4	FA0009P
5	HEX BOLT 1/2 X 4-1/2	FA0078P
	HEX BOLT 1/2 X 5	FA0101P
7	HEX BOLT 1/2 X 5-1/2	FA0080P
	HEX BOLT 5/8 X 2	FA0061P
	HEX BOLT 5/8 X 2-1/2	FA0062P
	HEX BOLT 5/8 X 4	FA0058P
	HEX BOLT 5/8 X 4	FA0059P
12	HEX BOLT 3/4 X 3	FA0108P
	HEX BOLT 3/4 X 5	FA0035P
	HEX BOLT 1-1/4 X 4-1/2	FA0159P
	CARRIAGE BOLT 3/8 X 1	FA0098P
	CARRIAGE BOLT 3/8 X 4	FA0103P
	CARRIAGE BOLT 3/8 X 4-1/2	FA0102P
	CARRIAGE BOLT 1/2 X 4-1/2	FA0138P
	CARRIAGE BOLT 1/2 X 5	FA0127P
	CARRIAGE BOLT 1/2 X 5-1/2	FA0128P
	CARRIAGE BOLT 5/8 X 1-1/2 Z	FA0142P
	CARRIAGE BOLT 5/8 X 6	FA0129P
24	TEK SCREW 1/4 X 1-1/4	FA0085P
	TEK SCREW 1/4 X 1-1/2 GAS	FA0082P
	TEK SCREW 12-24 X 1-1/4	FA0147P
27	SOCKET HEAD SHOULDER SCREW 3/8 X 5/8	FA0079P
28	SOCKET HEAD SHOULDER SCREW 3/8 X 1	FA0086P
	CONCRETE ANCHORS BY OTHERS	---



CALHOUN SUPERSTRUCTURE DETAILS 70-VP SERIES 402757 VP 70X156 R2		Calhoun Superstructure Ltd. 3702 Route Rd #10 York, ME 04090 800-265-3984 www.calhounsuperstructure.com
No. 1 DESCRIPTION: ENGINEER APPROVAL DATE: 12/08/2012	NAME: RWH DATE: 12/08/2012 CHECKED: RWH DATE: 12/08/2012 ENG. APRR. G.R. DATE: 12/08/2012	PROPERTY AND CONSTRUCTION OF THIS DRAWING IS THE SOLE RESPONSIBILITY OF THE CLIENT. ANY CHANGES TO THIS DRAWING MUST BE APPROVED BY THE CLIENT.
SCALE: D SHEET: 12 OF 13	DATE: 12/08/2012	PROJECT NO: 402757 VP 70X156 R2

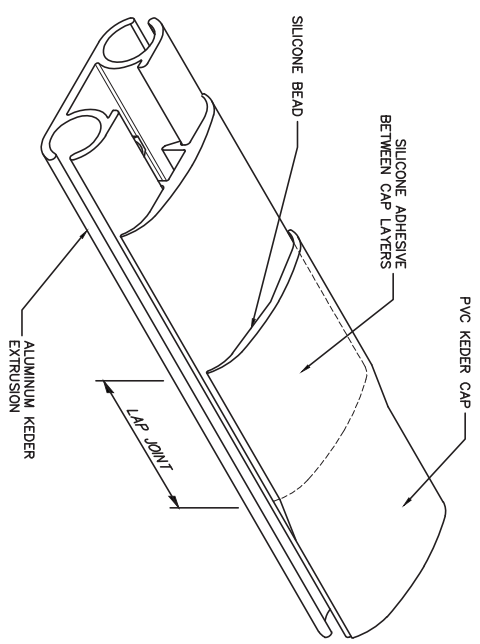


DETAIL 11 - HSS UPRIGHT TO TRUSS CONNECTION - INSIDE VIEW

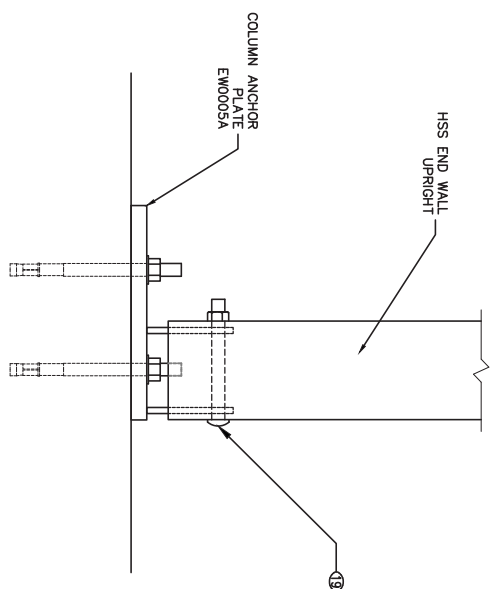


DETAIL 12 - UPRIGHT BASE BRACKET CONNECTION (END WALL)

NOTE: CONCRETE ANCHORS ARE DESIGNED AND SUPPLIED BY OTHERS

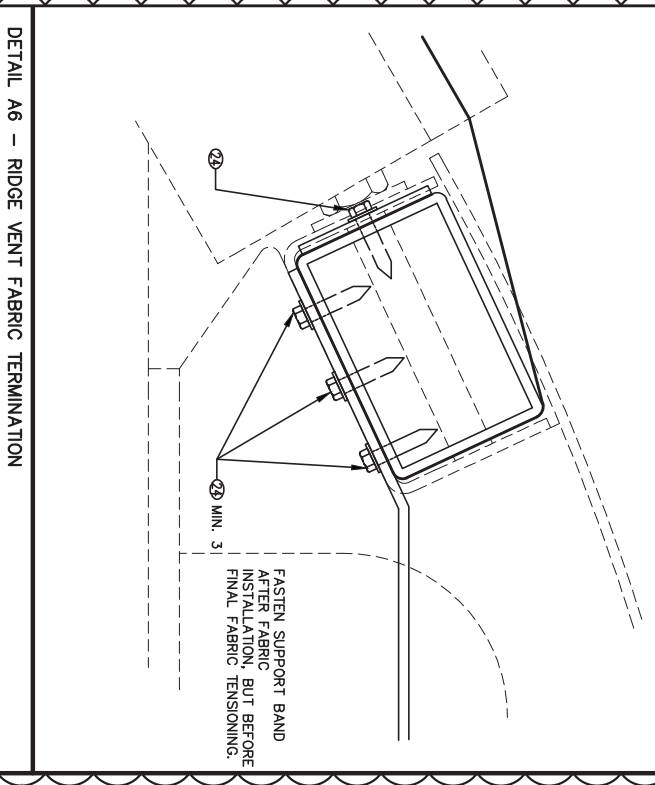


DETAIL 11 - KEDER CAP OVERLAP DETAIL



DETAIL K1 - UPRIGHT BASE BRACKET CONNECTION (END WALL AT DOOR)

NOTE: CONCRETE ANCHORS ARE DESIGNED AND SUPPLIED BY OTHERS



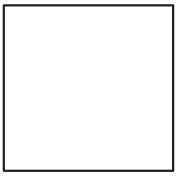
DETAIL A6 - RIDGE VENT FABRIC TERMINATION

2



ITEM No.	DESCRIPTION	PART No.
	HEX BOLT 1/2 X 1-1/2	FA0011P
	HEX BOLT 1/2 X 2	FA0100P
	HEX BOLT 1/2 X 3-1/2	FA0008P
	HEX BOLT 1/2 X 4	FA0009P
	HEX BOLT 1/2 X 4-1/2	FA0078P
	HEX BOLT 1/2 X 5	FA0010P
7	HEX BOLT 1/2 X 5-1/2	FA0080P
	HEX BOLT 5/8 X 2	FA0081P
	HEX BOLT 5/8 X 2-1/2	FA0082P
	HEX BOLT 5/8 X 4	FA0055P
	HEX BOLT 5/8 X 6	FA0077P
	HEX BOLT 3/4 X 3	FA0077P
	HEX BOLT 3/4 X 5	FA0005P
	HEX BOLT 1-1/4 X 4-1/2	FA0101P
	CARRIAGE BOLT 5/8 X 1	FA0098P
	CARRIAGE BOLT 5/8 X 4	FA0102P
	CARRIAGE BOLT 5/8 X 6	FA0107P
19	CARRIAGE BOLT 1/2 X 4-1/2	FA0138P
	CARRIAGE BOLT 1/2 X 5	FA0127P
	CARRIAGE BOLT 1/2 X 5-1/2	FA0109P
	CARRIAGE BOLT 5/8 X 1-1/2 Z	FA0142P
	TEK SCREW 1/4 X 1-1/4	FA0085P
24	TEK SCREW 1/4 X 1-1/2 GAS	FA0107P
	TEK SCREW 1/4 X 1-1/2 GAS	FA0085P
	SOCKET HEAD SHOULDER SCREW 3/8 X 5/8	FA0147P
	SOCKET HEAD SHOULDER SCREW 3/8 X 1	FA0008P
	CONCRETE ANCHORS BY OTHERS	---

HARDWARE SCHEDULE (AS OCCURS)



No.	DESCRIPTION	DATE
2	ADDED DETAIL	23/07/2012
1	ENGINEER APPROVAL	12/06/2012
	DESCRIPTION	DATE
	REVISION / ISSUE	

Calhoun Superstructure Ltd.
 3702 Bruce Rd #10
 Toronto, Ontario
 416-295-3984
 www.calhounsuperstructure.com

CALHOUN
 SUPERSTRUCTURE

DETAILS
 70' VP SERIES
 402757 VPe 70X156 R2

SCALE: 1/8" = 1'-0"
 SHEET 13 OF 13